

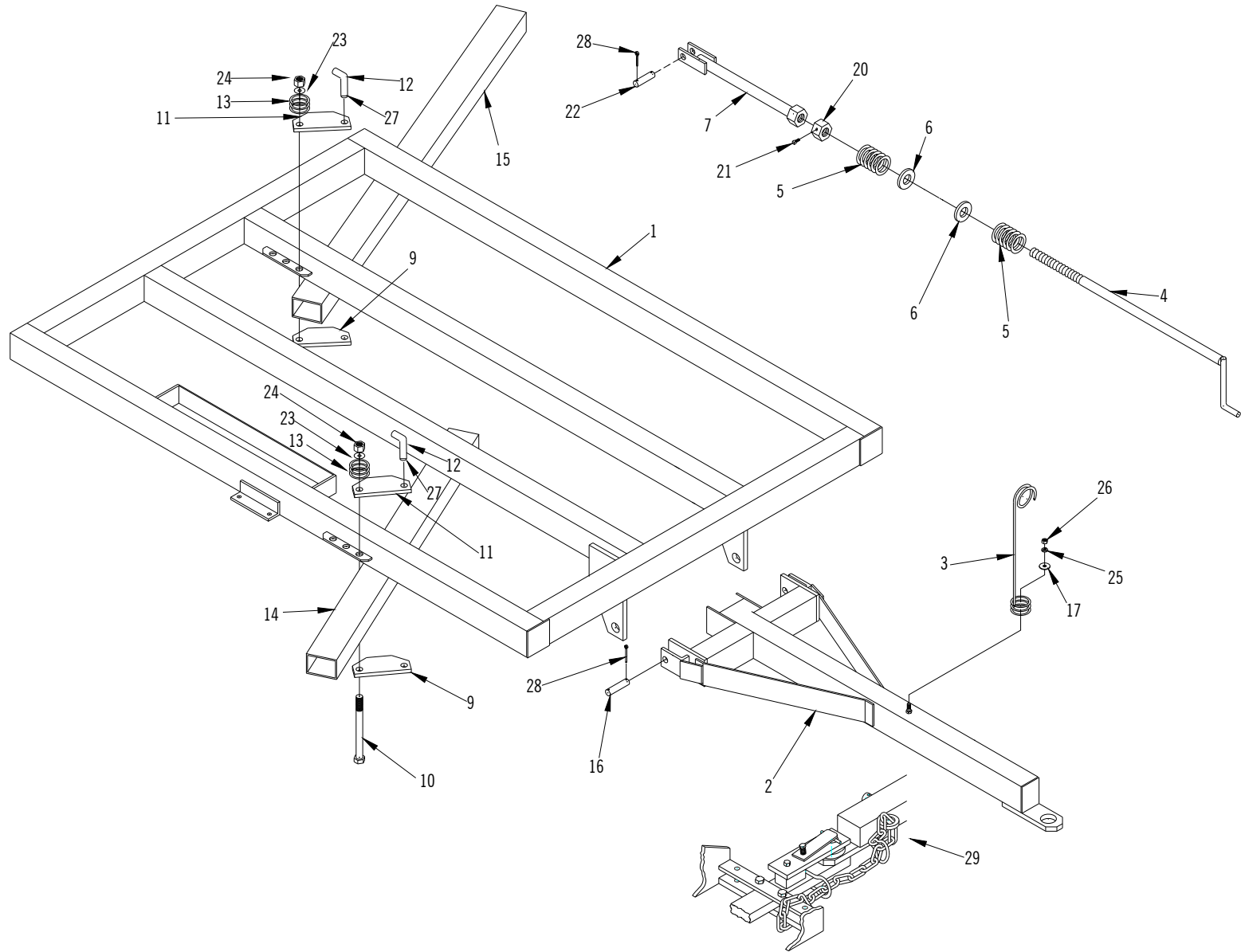
MODEL 395 DISC PARTS INDEX

	PAGE
Frame, Hitch, Gang Beam and Leveling Crank	2
Rockshaft & Wheel	4
Disc Gang Assembly	6
Scraper Assembly	8
Wing Type Gang Beam	10
Center Tooth	11

PAINT & DECALS

PART NO.	DESCRIPTION	PAGE
L016	Ezee-On Black Paint – ½ Pint	*
L003	Ezee-On Yellow Paint – Spray Bomb	*
DF13002	Ezee-On Decal – 2-1/2" x 15" (64mm x 381mm)	2
DF9510	"Caution" Decal – 3-1/2" x 15-1/4" (89mm x 387mm)	1
A75764	"Read Manual" Decal – 2-3/4" x 4-3/8" (70mm x 111mm)	1
DF7152	"Lubrication/Maintenance" Decal – 2-1/2" x 9" (64mm x 229mm)	1
DF6190	"395" Model Number Decal	2
DF13543	"Unhitching Hazard" Decal – 2-5/8" x 3-1/2" (67mm x 89mm)	1
A75759	"Check Wheel Bolt" Decal – 2-5/8" x 4" (67mm x 102mm)	1

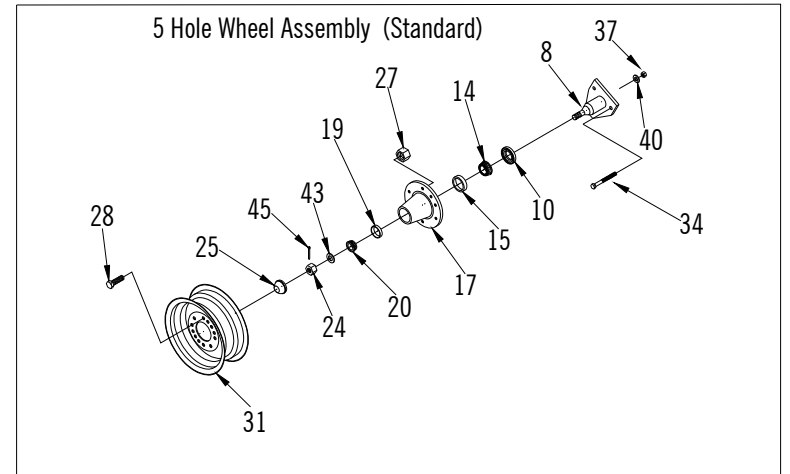
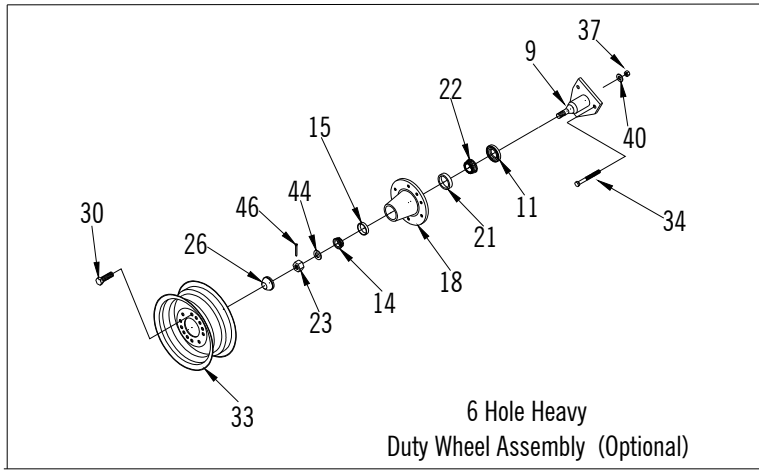
* as required



FRAME, HITCH, GANG BEAM & LEVELING CRANK
 MODEL 395 DISC

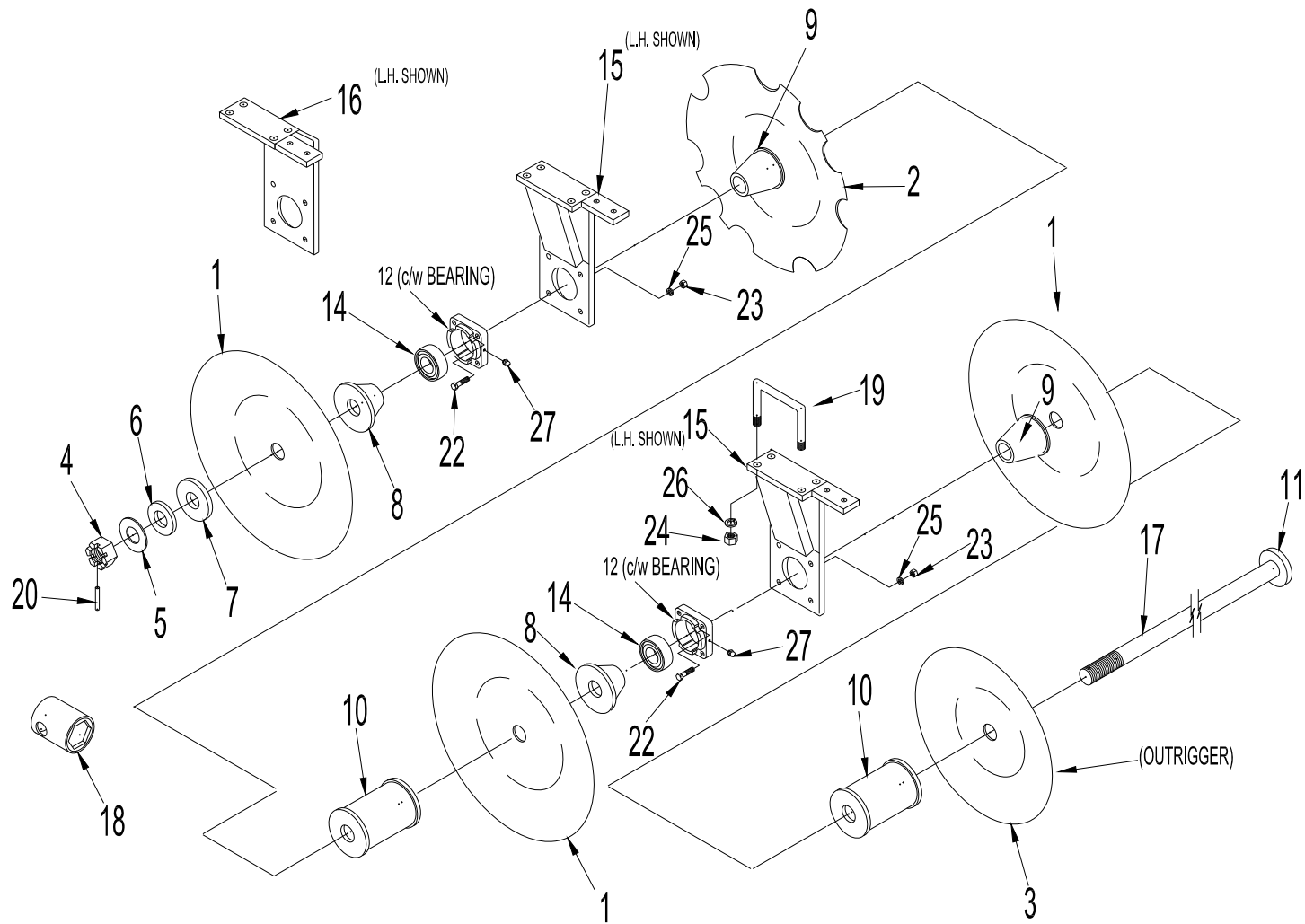
FRAME, HITCH, SOLID GANG BEAM AND LEVELING CRANK – MODEL 395 DISC

REF. NO.	PART NO.	DESCRIPTION	QTY. REQ'D
1	DFB6000	Main Frame c/w two hitch pins and cylinder lug	1
2	DHA6036	Hitch	1
3	DH9961	Hose Support – Spring Type	1
4	DHA6049	Leveling Crank	1
5	DH1	Compression Spring – Leveling Crank	2
6	DC15	Timken Thrust Bearing - #T199	2
7	DHA6047	Leveling Link	1
8	DF6023	Cylinder Lug	1
9	DFA6026	Gang Beam Mount Plate – Bottom	2
10	B100120	1" x 12" (25.4mm x 305mm) N.C. Hex Bolt	4
11	DFA6029	Gang Beam Mount Plate – Top	2
12	DF37	Pin – Gang Mount Assembly	2
13	DF22	Compression Spring	4
14		FRONT GANG BEAM – SOLID (FOR 8" SPACING DISC)	
	DBS4-60-1	60" (1524mm) Gang Beam – 34 Blade Disc	2
	DBS4-72-1	72" (1829mm) Gang Beam – 38 Blade Disc	2
	DBS4-78-1	78" (1981mm) Gang Beam – 42 Blade Disc	2
	DBS4-90-1	90" (2286mm) Gang Beam – 46 Blade Disc	2
	DBS4-96-1	96" (2438mm) Gang Beam – 50 Blade Disc	2
	DBS4-102-1	102" (2591mm) Gang Beam – 54 Blade Disc	2
	DBS4-114-1	114" (2896mm) Gang Beam – 58 Blade Disc	2
		FRONT GANG BEAM – SOLID (FOR 9" SPACING DISC)	
	DBS4-60-1	60" (1524mm) Gang Beam – 30 Blade Disc	2
	DBS4-72-1	72" (1829mm) Gang Beam – 34 Blade Disc	2
	DBS4-78-1	78" (1981mm) Gang Beam – 38 Blade Disc	2
	DBS4-90-1	90" (2286mm) Gang Beam – 42 Blade Disc	2
	DBS4-96-1	96" (2438mm) Gang Beam – 46 Blade Disc	2
	DBS4-108-1	108" (2743mm) Gang Beam – 50 Blade Disc	2
		FRONT GANG BEAM – SOLID (FOR 10-1/2" SPACING DISC)	
	DBS4-60-1	60" (1524mm) Gang Beam – 26 Blade Disc	2
	DBS4-72-1	72" (1829mm) Gang Beam – 30 Blade Disc	2
	DBS4-84-1	84" (2134mm) Gang Beam – 34 Blade Disc	2
	DBS4-96-1	96" (2438mm) Gang Beam – 38 Blade Disc	2
	DBS4-102-1	102" (2591mm) Gang Beam – 42 Blade Disc	2
15		REAR GANG BEAM – SOLID (FOR 8" SPACING DISC)	
	DBS4-78-1	78" (1981mm) Gang Beam – 34 Blade Disc	2
	DBS4-90-1	90" (2286mm) Gang Beam – 38 Blade Disc	2
	DBS4-90-1	90" (2286mm) Gang Beam – 42 Blade Disc	2
	DBS4-102-1	102" (2591mm) Gang Beam – 46 Blade Disc	2
	DBS4-108-1	108" (2743mm) Gang Beam – 50 Blade Disc	2
	DBS4-120-1	120" (3048mm) Gang Beam – 54 Blade Disc	2
	DBS4-126-1	126" (3200mm) Gang Beam – 58 Blade Disc	2
		REAR GANG BEAM – SOLID (FOR 9" SPACING DISC)	
	DBS4-72-1	72" (1829mm) Gang Beam – 30 Blade Disc	2
	DBS4-84-1	84" (2134mm) Gang Beam – 34 Blade Disc	2
	DBS4-96-1	96" (2438mm) Gang Beam – 38 Blade Disc	2
	DBS4-102-1	102" (2591mm) Gang Beam – 42 Blade Disc	2
	DBS4-114-1	114" (2896mm) Gang Beam – 46 Blade Disc	2
	DBS4-120-1	120" (3048mm) Gang Beam – 50 Blade Disc	2
		REAR GANG BEAM – SOLID (FOR 10-1/2" SPACING DISC)	
	DBS4-78-1	78" (1981mm) Gang Beam – 26 Blade Disc	2
	DBS4-90-1	90" (2286mm) Gang Beam – 30 Blade Disc	2
	DBS4-102-1	102" (2591mm) Gang Beam – 34 Blade Disc	2
	DBS4-114-1	114" (2896mm) Gang Beam – 38 Blade Disc	2
	DBS4-120-1	120" (3048mm) Gang Beam – 42 Blade Disc	2
16	DH6056	Hitch Pin	2
17	---	11/16" I.D. x 1-3/4" O.D. (17mm x 44mm) Flatwasher	1
18	DR5249	Lock-up and Cylinder Lug Pin	1
19	DF6024	Cylinder Lug Pin	1
20	DH5	2" N.C. (50.8mm) Heavy Hex Nut – Drilled for Set Screws	1
21	---	1/2" x 1" (12.7mm x 25.4mm) Square Head Set Screw	1
22	DF6024	Leveling Link Pin	1
23	DF49	2" O.D. x 1-1/32" I.D. x 3/16" (50.8mm x 26mm x 5mm) Washer	4
24	BN100	1" (25.4mm) N.C. Hex Nut	1
25	BW062L	5/8" (16mm) Lockwasher	1
26	BN062	5/8" (16mm) N.C. Hex Nut	1
27	BP18125	3/16" x 1-1/4" (5mm x 31.7mm) Cotter Pin	2
28	BP25150	1/4" x 1-1/2" (6.35mm x 38mm) Cotter Pin	6
29		10200 lb Safety Chain (optional)	1



ROCKSHAFT & WHEEL – MODEL 395 DISC

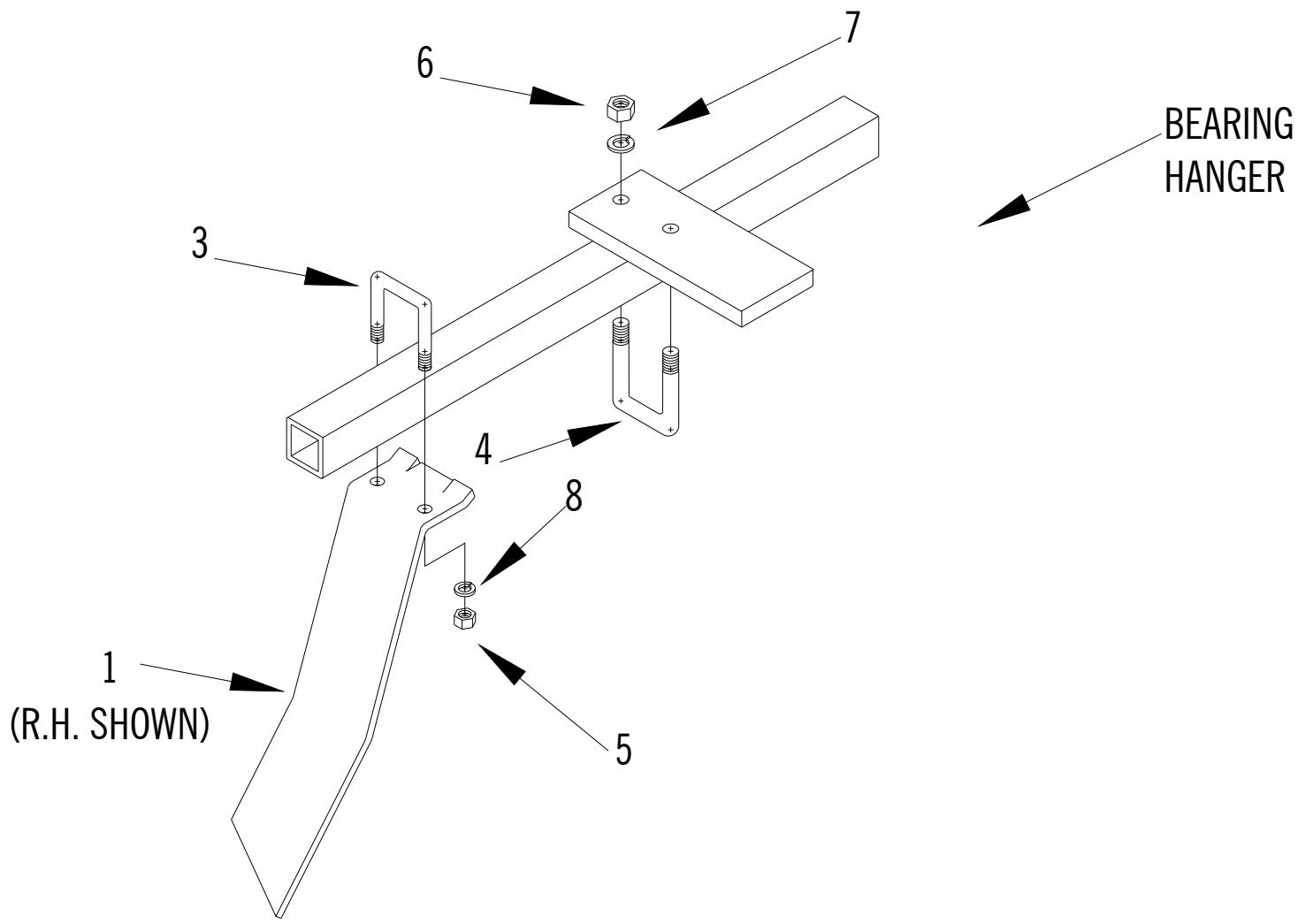
REF. NO.	PART NO.	DESCRIPTION	QTY. REQ'D
1	DRA6060	Rockshaft	1
2	DF41	Outside Bearing	2
3	DFA40	Center Bearing	1
4	DRA6020	Lock-up Strap	1
5	DR76	Axle Backing Plate	*
6	10GN1	¼" (6.35mm) - 28 Grease Fitting	3
8	DRA2	Axle Assembly – 517	*
9	DRA8	Axle Assembly – 618 w/3 Hole Mount Plate	*
10	DR85	Grease Seal – 517 Hub – (SE 13-1)	*
11	DR122	Grease Seal – 618 Hub	*
14	DR91	Cone Bearing #LM48548	*
15	DR92	Cup #LM48510	*
17	DRA3	Hub c/w Cups – 517	*
18	DRA9	Hub c/w Cups – 618	*
19	DR90	Cup #LM67010	*
20	DR89	Cone Bearing #LM67048	*
21	DR118	Cup #25520	*
22	DR120	Cone Bearing #25580	*
23	DR110	1" (25.4mm) N.F. Hex Slotted Nut	*
24	DR83	7/8" (22mm) N.F. Hex Slotted Nut	*
25	DR88	Hub Cap – 517 Hub	*
26	DR123	Hub Cap – 618 Hub	*
27	DR87	Wheel Bolts – ½" (12.7mm) N.F.	*
28	DR86	Tapered Wheel Nut – ½" (12.7mm) N.F.	*
30	DR125	9/16" N.F. x 1-1/8" (14.2 mm x 28.4mm) Wheel Stud	*
31	DR93	15" x 6" (381mm x 152mm) – 5 Hole Rim (used 7.60 x 15 tire)	*
33	DR127	15" x 8" (381mm x 152mm) – 6 Hole Rim (used 9.5L x 15 or 11L x 15 tire)	*
34	B062060	5/8" x 6" (15.7mm x 152mm) N.C. Hex Bolt	6
35	B075055	¾" x 5-1/2" (19mm x 139.7mm) N.C. Hex Bolt	6
36	B100030	1" x 3" (25.4mm x 76.2mm) N.C. Hex Bolt	1
37	BN062	5/8" (15.7mm) N.C. Hex Nut	6
38	BN075	¾" (19mm) N.C. Hex Nut	6
39	BN100	1" (25.4mm) N.C. Hex Nut	1
40	BW062L	5/8" (15.7mm) Lockwasher	6
41	BW075L	¾" (19mm) Lockwasher	6
42	BW100L	1" (25.4mm) Lockwasher	1
43	BW20009318F	2" O.D. x 15/16" I.D. x 3/16" (50.8mm x 23.6mm x 4.5mm) Flatwasher	*
44	BW20010612F	2" O.D. x 1-1/16" I.D. x 1/8" (50.8mm x 26.9mm x 3.0mm) Flatwasher	*
45	BP18100	3/16" x 1" (4.6mm x 25.4mm) Cotter Pin	*
46	BP18125	3/16" x 1-1/4" (4.6mm x 31.7mm) Cotter Pin	*



**DISC GANG ASSEMBLY
MODEL 395 DISC**

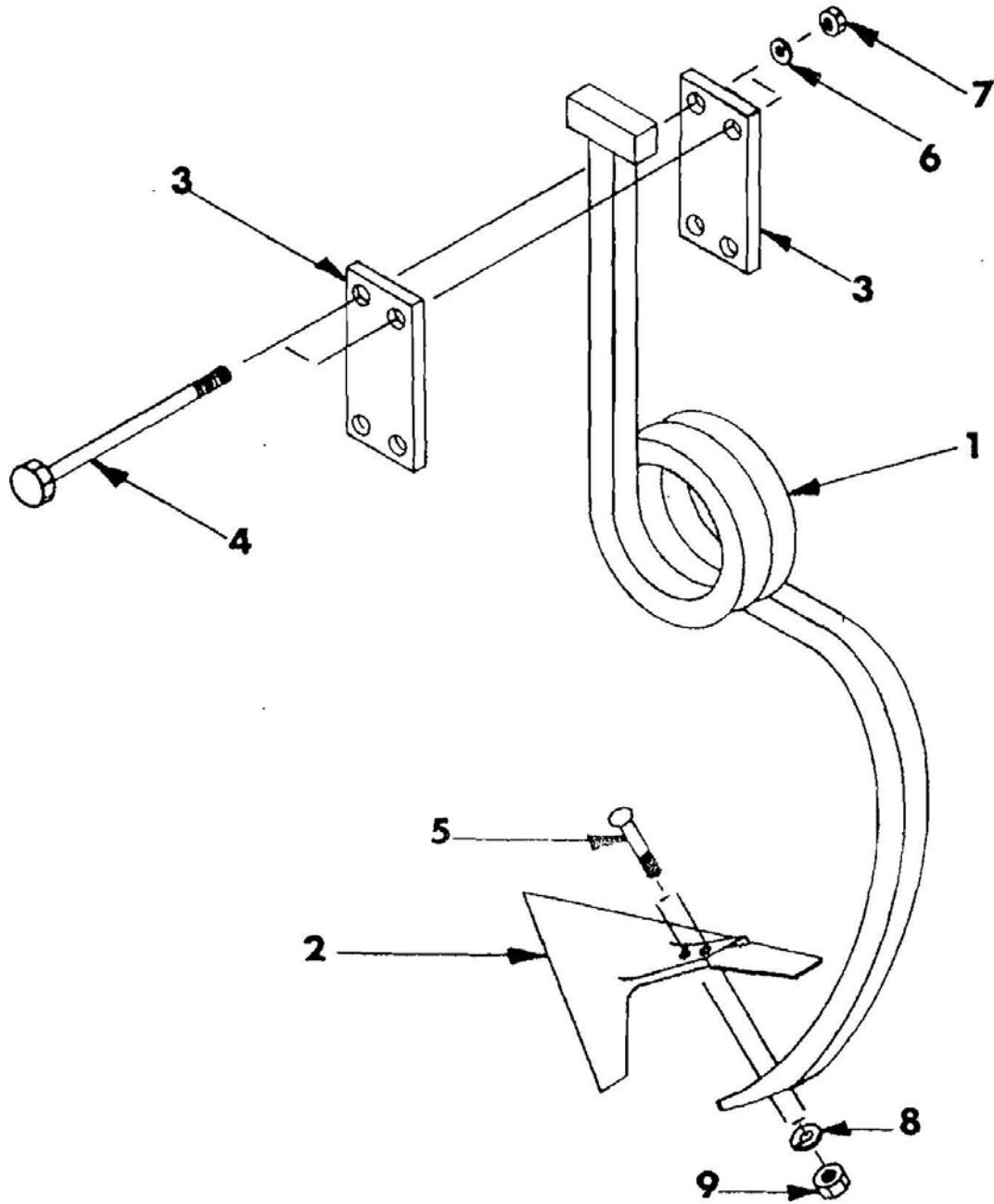
DISC GANG ASSEMBLY – MODEL 395 DISC

REF. NO.	PART NO.	DESCRIPTION	QTY. REQ'D
1	DG60	22" x 9/32" (559mm x 7mm) Plain Disc Blade	*
	DG68	24" x 1/4" (610mm x 6mm) Plain Disc Blade	*
	DG76	24" x 9/32" (610mm x 7mm) Plain Disc Blade	*
2	DG61	22" x 9/32" (559mm x 7mm) Notched Disc Blade	*
	DG79	24" x 9/32" (610mm x 7mm) Notched Disc Blade	*
3	DG84	16" x 4mm (.157) Plain Outrigger Blade	*
	DG133	18" x 5mm (.197) Plain Outrigger Blade	*
	DG134	20" x 5mm (.197) Plain Outrigger Blade	*
4	DG82	2" (50.8mm) N.C. Heavy Hex Slotted Nut	*
5	DG89	1/4" (6.35mm) Shim Washer	*
6	DG88	1/2" (12.7mm) Shim Washer	*
7	DG78	5" O.D. x 2" I.D. x 5/8" (127mm x 50.8mm x 15.7mm) Head Washer – (used 2003 and prior)	*
	DG13185	5-1/2" O.D. x 2" I.D. x 3/4" (139.7mm x 50.8mm x 19.0mm) Head Washer – (used w/22" & 24" blades) – used 2003 and later	*
8	DGA108	8" (203mm) Spacing Short Half Spool – 2-3/8" (60mm) Long	*
	DGA97	9" (229mm) Spacing Short Half Spool – 3-1/4" (82.5mm) Long w/5" (127mm) Washer – Convex	*
9	DGA102	8" and 9" (203 and 229mm) Spacing Long Half Spool – 2-3/8" (60mm) Long	*
10	DGA113	8" (203mm) Spacing Full Half Spool	*
	DGA98	9" (229mm) Spacing Full Spool w/5" End Washer	*
11	DG77	5" O.D. x 2" I.D. x 3/4" (127mm x 50.8mm x 19.0mm) Gang Bolt Washer – weld-on	*
12	DGB5334	211 Housing c/w Bearing & Grease Fitting	*
14	DG95	211 Series Greaseable Bearing	*
15	DGA6089	L.H. Straight 211 Bearing Hanger – 5/8" x 6" (15.7mm x 152mm) - 16-3/8" (415mm) overall length – (used prior to S/N 49603)	*
	DGA	L.H. Straight 211 Bearing Hanger – 5/8" x 6" (15.7mm x 152mm) - 16-3/4" (425mm) overall length – (used on S/N 49603 and later)	*
	DGA6090	R.H. Straight 211 Bearing Hanger – 5/8" x 6" (15.7mm x 152mm) - 16-3/8" (415mm) overall length – (used prior to S/N 49603)	*
	DGA	R.H. Straight 211 Bearing Hanger – 5/8" x 6" (15.7mm x 152mm) - 16-3/4" (425mm) overall length – (used on S/N 49603 and later)	*
16	DGA6091	L.H. Offset 211 Bearing Hanger – 5/8" x 6" (15.7mm x 152mm) - 16-3/8" (415mm) overall length – (used prior to S/N 49603)	*
	DGA	L.H. Offset 211 Bearing Hanger – 5/8" x 6" (15.7mm x 152mm) - 16-3/4" (425mm) overall length – (used on S/N 49603 and later)	*
	DGA6092	R.H. Offset 211 Bearing Hanger – 5/8" x 6" (15.7mm x 152mm) - 16-3/8" (415mm) overall length – (used prior to S/N 49603)	*
	DGA	R.H. Offset 211 Bearing Hanger – 5/8" x 6" (15.7mm x 152mm) - 16-3/4" (425mm) overall length – (used on S/N 49603 and later)	*
17		GANG BOLTS FOR 8" SPACING	
	DGA88	8 Blade Gang Bolt – 62-3/4" (1594mm) Long	*
	DGA89	9 Blade Gang Bolt – 71" (1803mm) Long	*
	DGA90	10 Blade Gang Bolt – 79-1/2" (2019mm) Long	*
	DGA91	11 Blade Gang Bolt – 87-3/4" (2229mm) Long	*
	DGA92	12 Blade Gang Bolt – 96" (2438mm) Long	*
	DGA93	13 Blade Gang Bolt – 104-1/4" (2648mm) Long	*
	DGA94	14 Blade Gang Bolt – 112-1/2" (2858mm) Long	*
	DGA95	15 Blade Gang Bolt – 121" (3073mm) Long	*
		GANG BOLTS FOR 9" SPACING	
	DGA67	7 Blade Gang Bolt – 60-1/2" (1537mm) Long	*
	DGA68	8 Blade Gang Bolt – 69-3/4" (1772mm) Long	*
	DGA69	9 Blade Gang Bolt – 78-3/4" (2000mm) Long	*
	DGA70	10 Blade Gang Bolt – 88-1/4" (2242mm) Long	*
	DGA71	11 Blade Gang Bolt – 97-1/2" (2477mm) Long	*
	DGA72	12 Blade Gang Bolt – 106-3/4" (2711mm) Long	*
	DGA73	13 Blade Gang Bolt – 115-3/4" (2940mm) Long	*
	DGA35	Socket Wrench	*
18	DGA35	Socket Wrench	*
19	DG6080	5/8" x 4" x 5-7/16" (15.7mm x 102mm x 138mm) U-Bolt	*
20	DG10310	7/16" x 3" (10.9mm x 76mm) Lock Pin	*
22		1/2" x 2-1/4" (12.7mm x 57mm) N.C. Hex Bolt	*
23		1/2" (12.7mm) N.C. Hex Nut	*
24		5/8" (15.7mm) N.C. Hex Nut	*
25		1/2" (12.7mm) Lockwasher	*
26		5/8" (15.7mm) Lockwasher	*
27	10GN1	1/4" (6.35mm) – 28 Grease Fitting	*



SCRAPER ASSEMBLY – MODEL 395 DISC

REF. NO.	PART NO.	DESCRIPTION	QTY. REQ'D
1	DG6083	L.H. Scraper – used with 5/8" x 6" (15.7mm x 152mm) Hanger	*
	DG6084	R.H. Scraper – used with 5/8" x 6" (15.7mm x 152mm) Hanger	*
2		SCRAPER BAR FOR 8" SPACING DISC	
	DS66	8 Blade Scraper Bar – 66" (1676mm) Long	*
	DS72	9 Blade Scraper Bar – 72" (1829mm) Long	*
	DS84	10 Blade Scraper Bar – 84" (2134mm) Long	*
	DS90	11 Blade Scraper Bar – 90" (2286mm) Long	*
	DS102	12 Blade Scraper Bar – 102" (2591mm) Long	*
	DS108	13 Blade Scraper Bar – 108" (2743mm) Long	*
	DS114	14 Blade Scraper Bar – 114" (2896mm) Long	*
	DS126	15 Blade Scraper Bar – 126" (3200mm) Long	*
		SCRAPER BAR FOR 9" SPACING DISC	
	DS66	7 Blade Scraper Bar – 66" (1676mm) Long	*
	DS72	8 Blade Scraper Bar – 72" (1829mm) Long	*
	DS84	9 Blade Scraper Bar – 84" (2134mm) Long	*
	DS90	10 Blade Scraper Bar – 90" (2286mm) Long	*
	DS102	11 Blade Scraper Bar – 102" (2591mm) Long	*
	DS114	12 Blade Scraper Bar – 114" (2896mm) Long	*
	DS120	13 Blade Scraper Bar – 120" (3048mm) Long	*
3	DG5308	1/2" x 2" (12.7mm x 50.8mm) U-Bolt	*
4	DG5309	5/8" x 2" (15.7mm x 50.8mm) U-Bolt	*
5		1/2" (12.7mm) N.C. Hex Nut	*
6		5/8" (15.7mm) N.C. Hex Nut	*
7		5/8" (15.7mm) N.C. Lockwasher	*
8		1/2" (12.7mm) Lockwasher	*



CENTRE TOOTH ASSEMBLY - MODEL 395 DISC

REF. NO.	PART NO.	DESCRIPTION	QTY. REQ'D
1	DT6200	Shank	1
2	DT6201	10" (254mm) Shovel – (55 deg, holes for 7/16" bolts, 2" hole spacing)	1
3	DT6202	Clamp Plate	2
4	BO62075	5/8" x 7-1/2" (15.7mm x 190.5mm) N.C. Hex Bolt	4
5		7/16" x 2" (10.9mm x 50.8mm) N.C. Plow Bolt #3 Head	2
6	BW062L	5/8" (15.7mm) Lockwasher	4
7	BN062	5/8" (15.7mm) N.C. Hex Nut	4
8	BW043L	7/16" (10.9mm) Lockwasher	2
9	BN043	7/16" (10.9mm) N.C. Hex Nut	2

HYDRAULIC SYSTEM ASSEMBLY - MODEL 395 DISC

REF. NO.	PART NO.	DESCRIPTION	QTY. REQ'D
1		4" x 8" (101.6mm x 203.2mm) Hydraulic Cylinder – See Break Down Below	1
2		1-1/4" (31.7mm) Dia. X 4-3/4" (120.6mm) Pin	2
3		1/2" N.P.T. (12.7mm) x 90 Degree Street Elbow	2
4		1/2" x 213" (12.7mm x 5410mm) Hydraulic Hose	1
5		1/2" x 198" (12.7mm x 5029mm) Hydraulic Hose	1
6		5/16" x 1-3/4" (7.8mm x 44.4mm) Cotter Pin	4
7		Stop Depth Control Package – 1-1/2" I.D. x 6-1/2" Lg. (38.1mm x 165.1mm)	1
8		1" (25.4mm) Depth Stop	1
9		1-1/2" (38.1mm) Depth Stop	1
10		2" (50.8mm) Depth Stop	2
11		4-1/4" (107.9mm) Depth Stop	1