

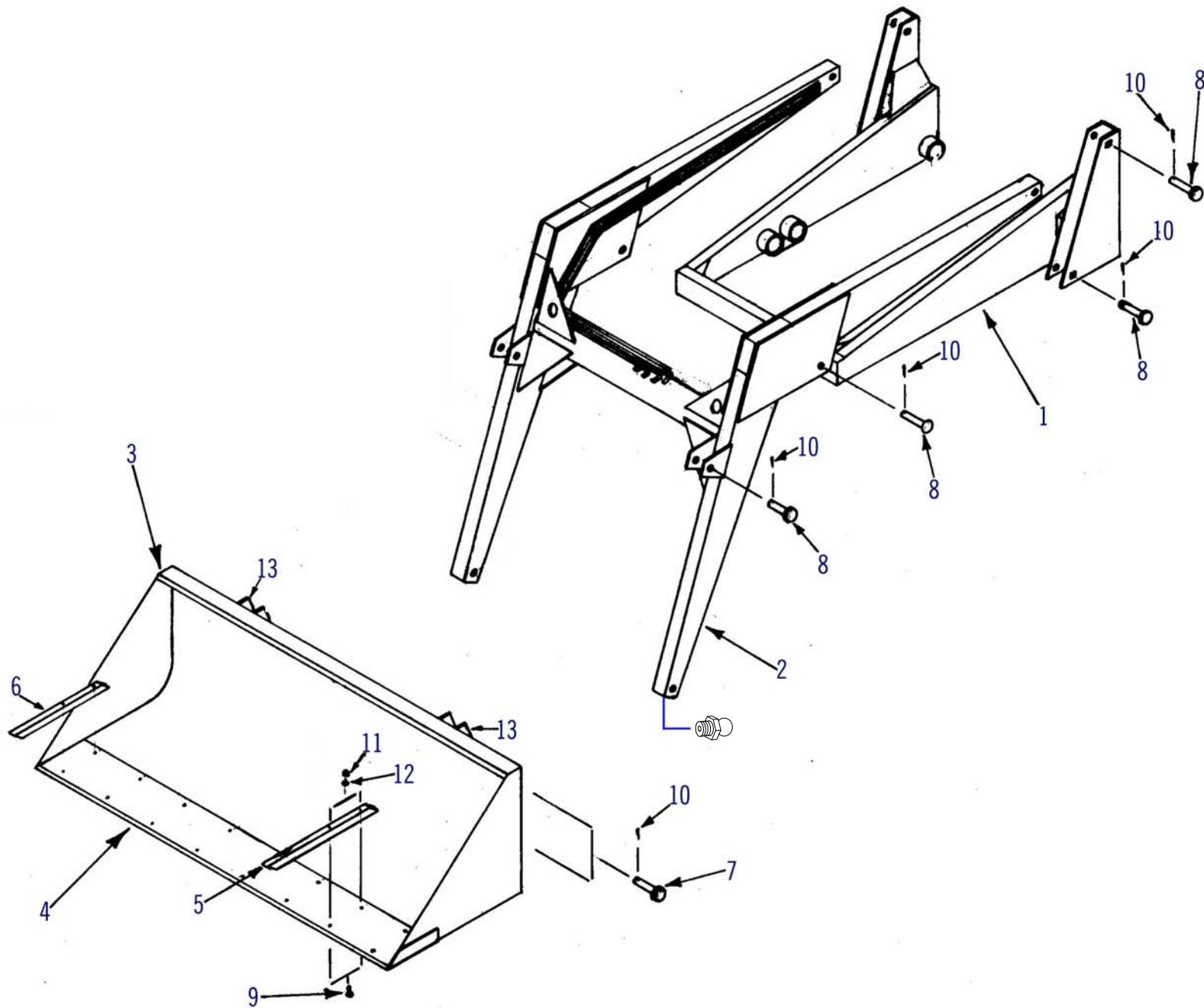
MODEL 2070 PARTS INDEX

	PAGE
H-Frame, Yoke, and Bucket	16
Ezee-A-Tach System	18
Hydraulic System	19
Cylinder Parts	20
Cylinder Seal Kits	24

PAINT & DECALS

PART NO.	DESCRIPTION	QTY. REQ'D
DF13002	Ezee-On Decals	3
A75764	Read Manual Decal	1
L3216	Falling Load Decal	3
L014/L017	Caution Decal	1
L015	Black Paint (1 Quart Can)	*
L016	Black Paint (1/2 Pint Can)	*

* As Required

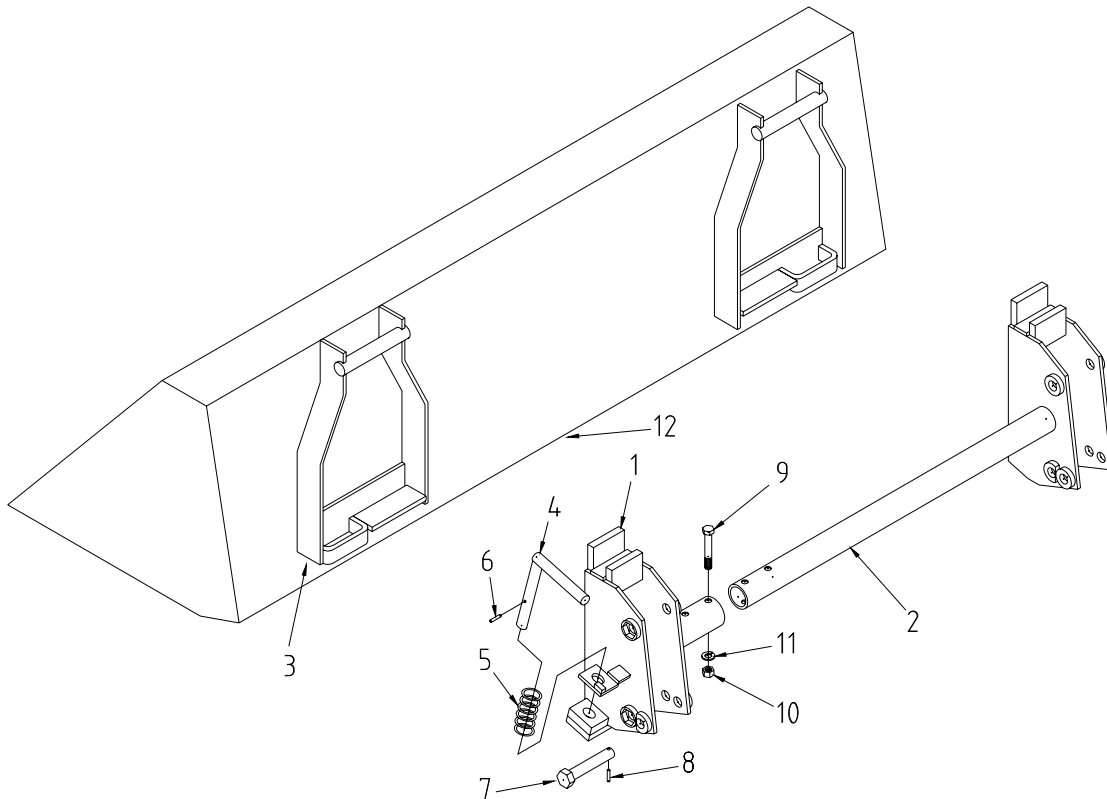


H-FRAME, YOKE and BUCKET

REF. NO.	PART NO.	DESCRIPTION	QTY. REQ'D
1	LB1800	2070-1 Narrow Yoke Assembly c/w 4 Pins	1
	LB1801	2070-2 Wide Yoke Assembly c/w 4 Pins	1
	LB1802	2070-3 Extra Wide Yoke Assembly c/w 4 Pins	1
	LB1803	2070-4 Super Wide Yoke Assembly c/w 4 Pins	1
	LB1805	2070-2-Z Wide Yoke Assembly c/w 4 Pins - Zetor	1
	LB1804	2070-3-Z Extra Wide Yoke Assembly c/w 4 Pins - Zetor	1
2	LB1795	Main Frame Assembly c/w 4 Pins	1
3	LB1751	60" Bucket Assembly c/w 4 Pins (Standard)	1
	LB1757	72" Standard Bucket Assembly c/w 4 Pins (Standard)	1
	LB1761	84" Standard Bucket Assembly c/w 4 Pins (Standard)	1
4	L41	60" Bucket Blade (Weld-On)	1
	L42	72" Bucket Blade (Weld-On)	1
	L43	84" Bucket Blade (Weld-On)	1
5	L51	Bucket Tooth - (Std)	*
	L52	Bucket Tooth - (Lomg)	*
6	L1680	Short Corner Bucket Tooth, Used with Standard Teeth	2
	L51	Short Corner Bucket Tooth, Used with Extra Long Teeth	2
7	L2266	1" x 5-1/2" ** Hex Head Pin	4
8	L885	1" x 4-11/16" ** Hex Head Pin	6
9	L57	7/16" x 2-1/2" N.C. Carriage Head Bolt	*
10		1/4" x 1-1/2" Cotter Pin	12
11		7/16" N.C. Hex Nut	*
12		7/16" Lockwasher	*
13	L1753	Round Hole Bucket Lug (Weld-On)	4
14	10GN1	1/4" - 28 Grease Fitting	4

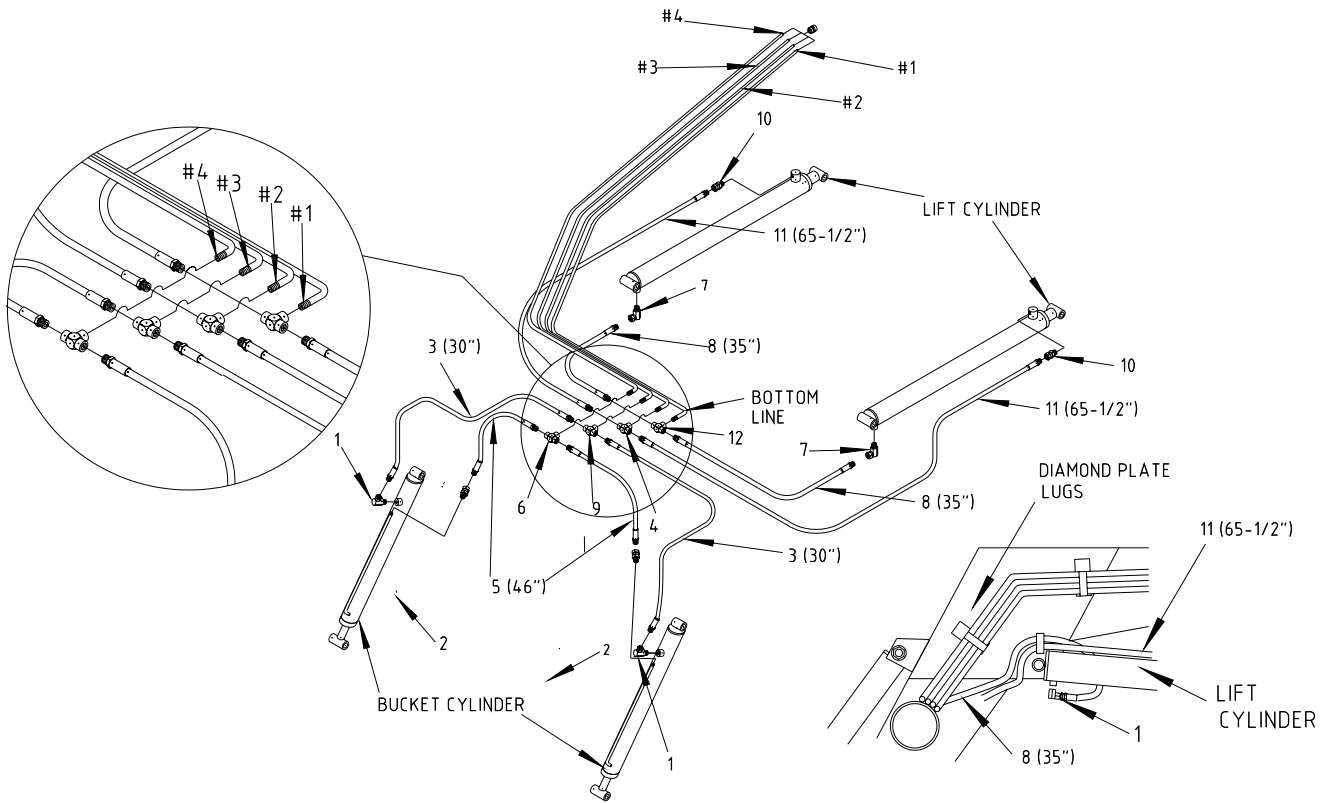
** Pins measured from under head to centre of cotter pin hole

* As Required



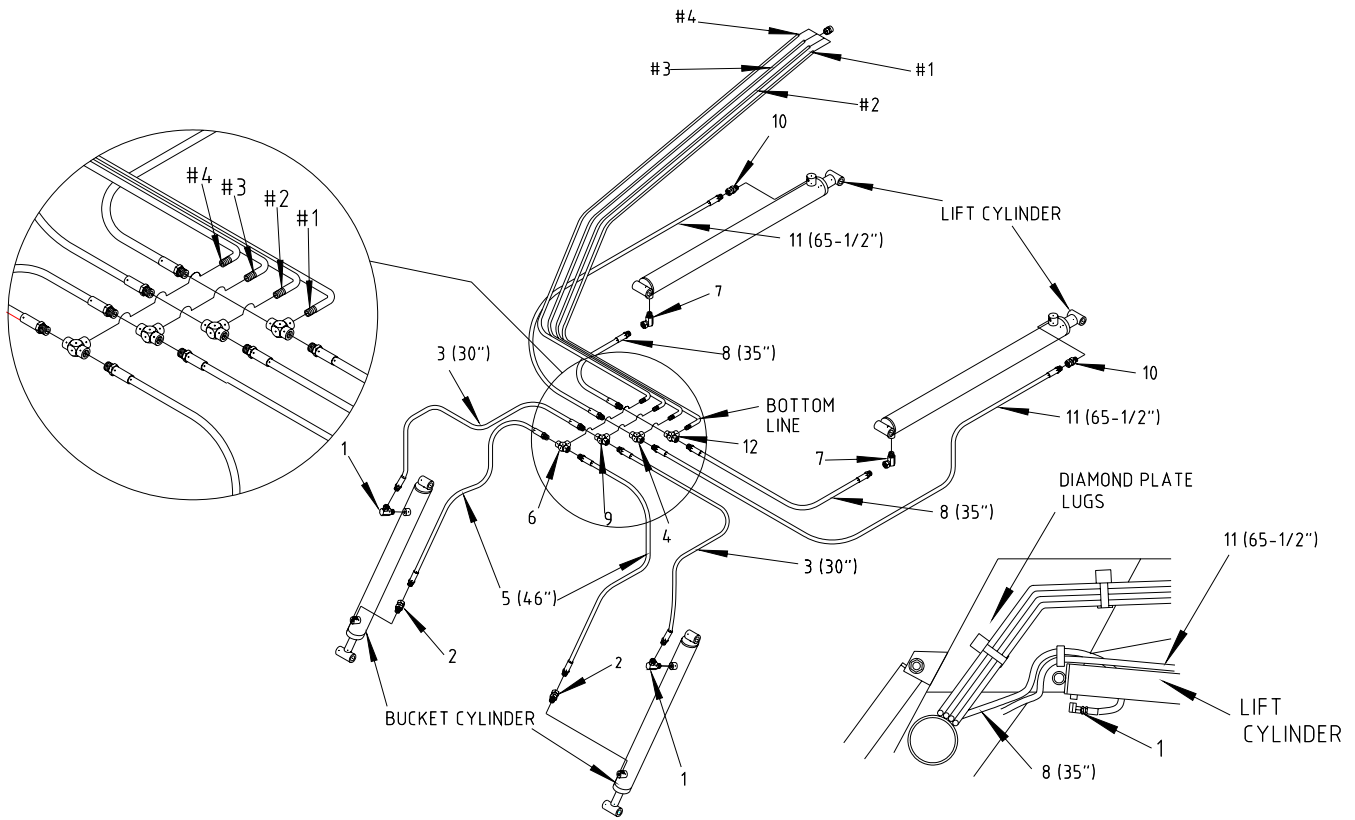
EZEE-A-TACH SYSTEM - (Optional)

REF. NO.	PART NO.	DESCRIPTION	QTY. REQ'D
1	LB2501	Model 2070 Loader Ezee-A-Tach Carrier c/w attaching pins and locking pins	1
2	LA2533	Ezee-A-Tach Bracket - R.H. Side - Weld-On	1
	LA2534	Ezee-A-Tach Bracket - L.H. Side - Weld-On	1
3	LA2507	Locking Pin	2
4	L25103	Locking Pin Spring	2
5	L2511	Roll Pin	2
6	L2266	1" x 5-1/2" Hex Head Pin - pin lengths measured from under head to centre of cotter pin hole	4
7	---	1/4" x 1-1/2" Cotter Pin	4
8	---	5/8" x 4" N.C. Hex Bolt - Used 1998 and prior	1
9	---	3/8" x 4" N.C. Hex Bolt - Used after 1998	1
	---	5/8" N.C. Hex Nut - Used 1998 and prior	1
	---	3/8" N.C. Hex Nut - Used after 1998	1
10	---	5/8" Lockwasher - Used 1998 and prior	1
	---	5/16" Lockwasher - Used after 1998	1
11	LA2533	72" Ezee-A-Tach Bucket - Less Teeth	*
	LA2534	84" Ezee-A-Tach Bucket - Less Teeth	*
	LA2535	96" Ezee-A-Tach Bucket - Less Teeth	*



**MODEL 2070 HYDRAULIC SYSTEM
(FOR MODELS PRIOR TO SERIAL NO. 45175)**

REF. NO.	PART. NO.	DESCRIPTION	QTY. REQ'D
1	255, 279	Lift Cylinder - See Cylinder Parts List instructions on page 21	2
2	272, 285	Bucket Cylinder - See Cylinder Parts List instructions on page 21	2
3	L1810	Bottom 1 Hydraulic Oil Line	1
4	L1809	Bottom 2 Hydraulic Oil Line	1
5	L1808	Bottom 3 Hydraulic Oil Line	1
6	L1807	Bottom 4 Hydraulic Oil Line	1
7	DL5280	3/8" Connector Union	4
8	DL5282	3/8" x 3/8" x 3/8" Tee	4
9	DL29	3/8" Female Swivel	2
10	L1619	3/8" Male-Female Swivel Adapter	2
11	DL9769	3/8" x 90 degree Swivel Street Elbow	4
12	L2937	3/8" x 30" Hydraulic Hose	2
13	L2935	3/8" x 35" Hydraulic Hose	2
14	L3011	3/8" x 65-1/2" Hydraulic Hose	2



**MODEL 2070 HYDRAULIC SYSTEM
(FOR MODELS WITH SERIAL NO #45175 & UP)**

REF. NO.	PART. NO.	DESCRIPTION	QTY. REQ'D
1	255, 279	Lift Cylinder - See Cylinder Parts List instructions on page 21	2
2	310	Bucket Cylinder - See Cylinder Parts List instructions on page 21	2
3	L1810	Bottom 1 Hydraulic Oil Line	1
4	L1809	Bottom 2 Hydraulic Oil Line	1
5	L1808	Bottom 3 Hydraulic Oil Line	1
6	L1807	Bottom 4 Hydraulic Oil Line	1
7	DL5280	3/8" Connector Union	4
8	DL5282	3/8" x 3/8" x 3/8" Tee	4
9	L1619	3/8" Male-Female Swivel Adapter	4
10	DL9769	3/8" x 90 degree Swivel Street Elbow	4
11	L2937	3/8" x 30" Hydraulic Hose	2
12	L2935	3/8" x 35" Hydraulic Hose	2
13	L4347	3/8" x 46" Hydraulic Hose	2
14	L3011	3/8" x 65-1/2" Hydraulic Hose	2

CYLINDER PARTS LIST

1. Using chart below, find cylinder code number by matching diameter, stroke, and type.
2. Once the code number has been established, locate cylinder further in book and use correct reference number to locate part number.

CYLINDER PART NUMBER CODE

25HP10

Part Number

Part Description - Herd Plate, etc.

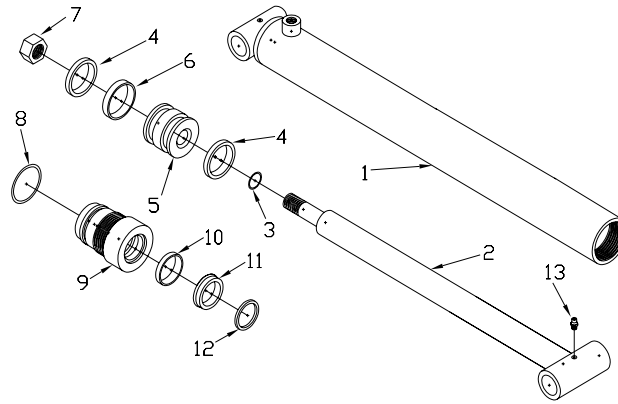
10 Means Fits Any Size of Cylinder

25 Means Used Most Commonly on 2-1/2" Cylinders

30 Means Used Most Commonly on 3" Cylinders

MODEL 2070 CYLINDER SPECIFICATIONS

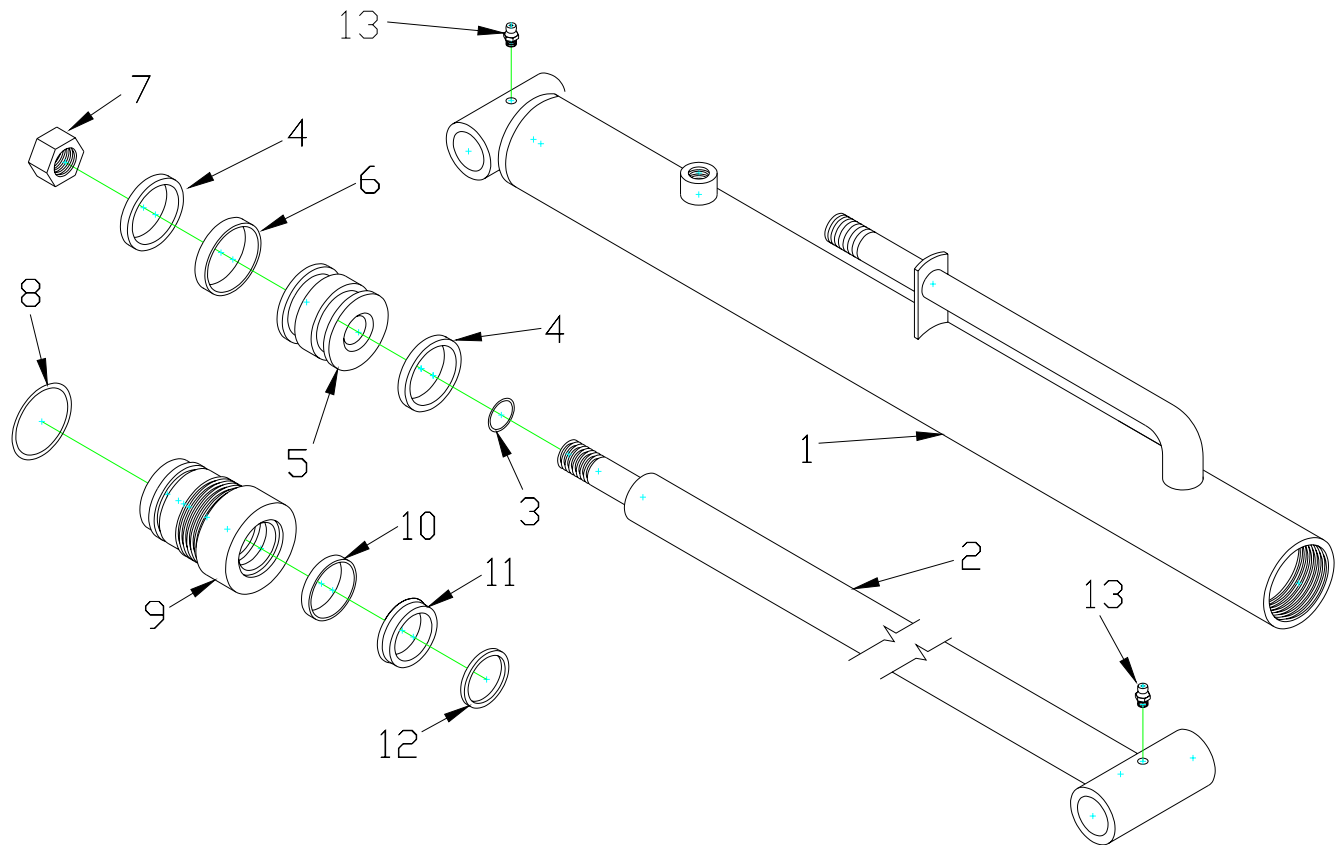
CODE NO.	DIAMETER	STROKE	C.C. LENGTH	SHAFT DIAMETER	TYPE	APPLICATION	PARTS LIST PAGE NO.
255	2-1/2"	27"	26-1/2"	1-1/2"	N4 - w/OIL LINE PORT	Bucket	22
272	3"	18"	35-1/2"	1-1/2"	N6 - w/90 DEG. PORT	Lift	27
279	3"	27"	35-1/2"	1-1/2"	N4 - w/90 DEG. PORT	Lift	26
285	3"	18"	26-1/2"	1-1/2"	N6 - w/OIL LINE PORT & 1-1/2" O.D. CROSS TUBE	Bucket	22
310	3"	18"	26-1/2"	1-1/2"	N6 - w/90 DEG. PORT & 1-3/4" O.D. CROSS TUBE	Bucket	25
313	3"	27"	35-1/2"	1-1/2"	N6 - w/OIL LINE PORT	Lift	28
315	3"	18"	26-1/2"	1-1/2"	N6 W/OIL LINE PORT & 1-3/4" CROSS TUBE	Bucket	24



**HYDRAULIC BUCKET CYLINDER ASSEMBLY
N4 TYPE (w/OIL LINE PORT)
(FOR MODELS PRIOR TO SERIAL NO. 40100)**

REF. NO.	PART NO.	DESCRIPTION	CYLINDER CODE
			272
1	30TU10	Tube Assembly - 3" x 18"	1
2	10SH14	Shaft - 1-1/2" x 18" - w/1" stud	1
3	10OR21	O-Ring - 1" I.D. x 1-1/8" O.D.	1
4	30CU2	U-Cups - 2-1/2" I.D. x 3" O.D. x 3/8"	2
5	30PB2	Plunger Block - 3"	1
6	30WR1	3" Wear Ring - 2-3/4" I.D. x 3" O.D. x 3/8"	1
7	10NU4	1" N.F. Locking Nut	1
8	10OR3	O-Ring - 2-5/8" I.D. x 3" O.D.	1
9	30HP9	Head Plate - 1-1/2" Shaft w/Wear Ring Groove - (N4 type)	1
10	10WR1	Head Plate Wear Ring - 1-1/2" I.D. x 1-3/4" O.D. x 1" Wide	1
11	10RS1	Rod Seal - 1-1/2" I.D. x 1-7/8" O.D. x 3/8"	1
12	10WS1	Wiper Seal - 1-1/2" I.D. x 2-1/8" O.D. x 3/16"	1
13	10GN1	1/4" - 28 Grease Fitting	2

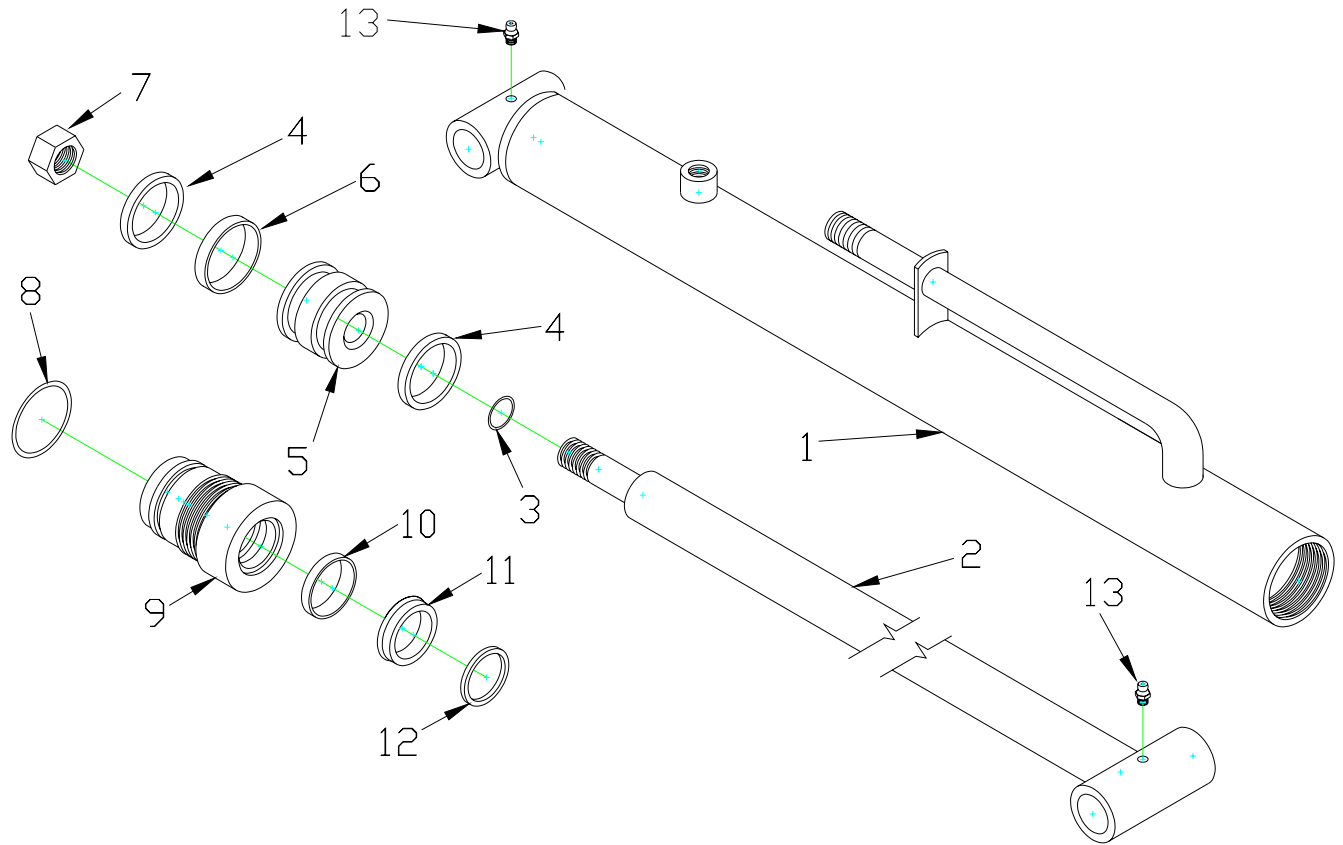
Refer to illustrations on page 29 to help determine cylinder type.



**HYDRAULIC BUCKET CYLINDER -
N6 TYPE (w/OIL LINE PORT)
(FOR MODELS WITH SERIAL NO# from 41251 to 43155)**

REF. NO.	PART NO.	DESCRIPTION	CYLINDER CODE
			285
1	30TU28	Tube Assembly - 3" x 18" - w/oil Line Port & 1-1/2" O.D. Cross Tube	1
2	10SH14	Shaft - 1-1/2" x 18" w/1" Stub	1
3	100R21	O-Ring - 1" I.D. x 1-1/8" O.D.	1
4	30CU2	U-Cups - 2-1/2" I.D. x 3" O.D. x 3/8"	2
5	30PB2	Plunger Block - 3"	1
6	30WR1	3" Wear Ring - 2-3/4" I.D. x 3" O.D. x 3/8"	1
7	10NU4	1" N.F. Locking Nut	1
8	100R3	O-Ring - 2-5/8" I.D. x 3" O.D.	1
9	30HP11	Head Plate - 1-1/2" Shaft w/Wear Ring Groove - 3" Under Head Length	1
10	10WR1	Head Plate Wear Ring - 1-1/2" I.D. x 1-3/4" O.D. x 1" Wide	1
11	10RS1	Rod Seal - 1-1/2" I.D. x 1-7/8" O.D. x 3/8"	1
12	10WS1	Wiper Seal - 1-1/2" I.D. x 2-1/8" O.D. x 3/16"	1
13	10GN1	1/4" - 28 Grease Fitting	2

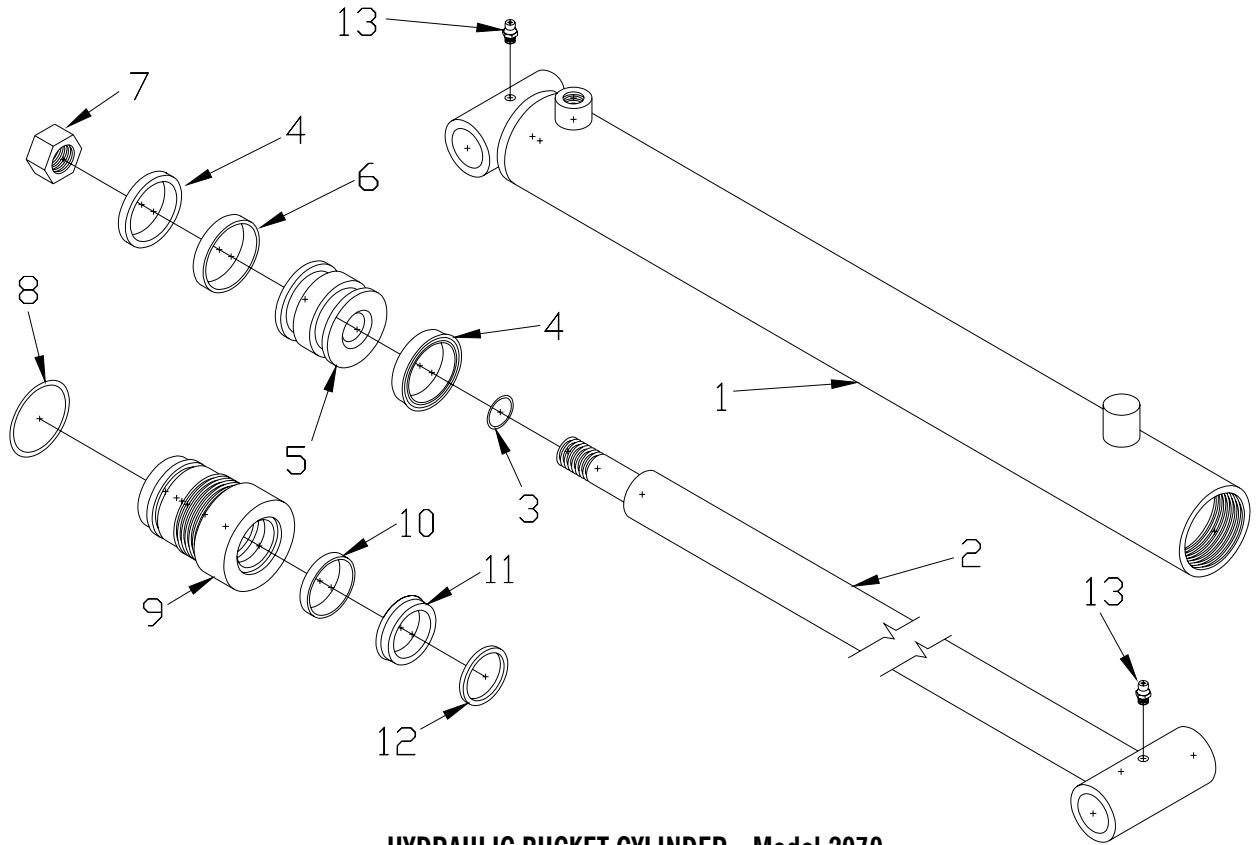
Refer to illustrations on page 29 to help determine cylinder type.



**HYDRAULIC BUCKET CYLINDER
N6 TYPE (W/OIL LINE PORT)
(FOR MODELS WITH SERIAL NO. From 43156 to 45146)**

REF. NO.	PART NO.	DESCRIPTION	CYLINDER CODE
			315
1	30TU35	Tube Assembly - 3" x 18" - w/oil line 1-3/4" O.D. Cross tube	1
2	10SH14	Shaft - 1-1/2" x 18" w/1" Stub	1
3	100R21	O-Ring - 1" I.D. x 1-1/8" O.D.	1
4	30CU2	U-Cups - 2-1/2" I.D. x 3" O.D. x 3/8"	2
5	30PB2	Plunger Block - 3"	1
6	30WR1	3" Wear Ring - 2-3/4" I.D. x 3" O.D. x 3/8"	1
7	10NU4	1" N.F. Locking Nut	1
8	100R3	O-Ring - 2-5/8" I.D. x 3" O.D.	1
9	30HP14	Head Plate - 1-1/2" Shaft w/Wear Ring Groove - 2-5/8" Under Head Length	1
10	10WR1	Head Plate Wear Ring - 1-1/2" I.D. x 1-3/4" O.D. x 1" Wide	1
11	10RS1	Rod Seal - 1-1/2" I.D. x 1-7/8" O.D. x 3/8"	1
12	10WS1	Wiper Seal - 1-1/2" I.D. x 2-1/8" O.D. x 3/16"	1
13	10GN1	1/4" - 28 Grease Fitting	2

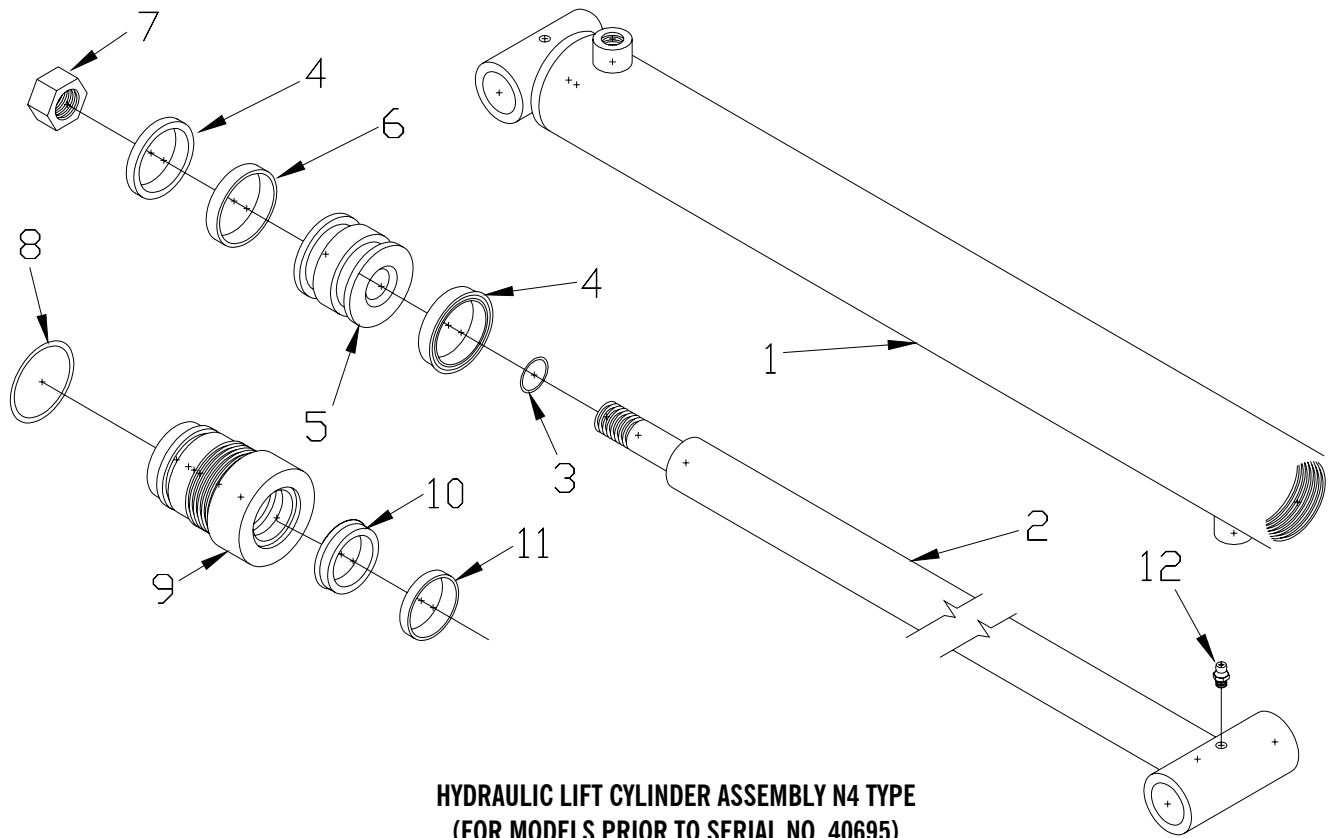
Refer to illustrations on page 29 to help determine cylinder type.



**HYDRAULIC BUCKET CYLINDER - Model 2070
N6 TYPE (W/90 DEGREE PORT)
(FOR MODELS WITH SERIAL NO# 45147 & UP)**

REF. NO.	PART NO.	DESCRIPTION	CYLINDER CODE
			310
1	30TU36	Tube Assembly - 3" x 18" - Order N6 type w/90 deg. port	1
2	10SH14	Shaft - 1-1/2" x 18" w/1" Stub	1
3	100R21	O-Ring - 1" I.D. x 1-1/8" O.D.	1
4	30CU2	U-Cups - 2-1/2" I.D. x 3" O.D. x 3/8"	2
5	30PB2	Plunger Block - 3"	1
6	30WR1	3" Wear Ring - 2-3/4" I.D. x 3" O.D. x 3/8"	1
7	10NU4	1" N.F. Locking Nut	1
8	100R3	O-Ring - 2-5/8" I.D. x 3" O.D.	1
9	30HP14	Head Plate - 1-1/2" Shaft w/Wear Ring Groove - 2-5/8" Under Head Length	1
10	10WR1	Head Plate Wear Ring - 1-1/2" I.D. x 1-3/4" O.D. x 1" Wide	1
11	10RS1	Rod Seal - 1-1/2" I.D. x 1-7/8" O.D. x 3/8"	1
12	10WS1	Wiper Seal - 1-1/2" I.D. x 2-1/8" O.D. x 3/16"	1
13	10GN1	1/4" - 28 Grease Fitting	2

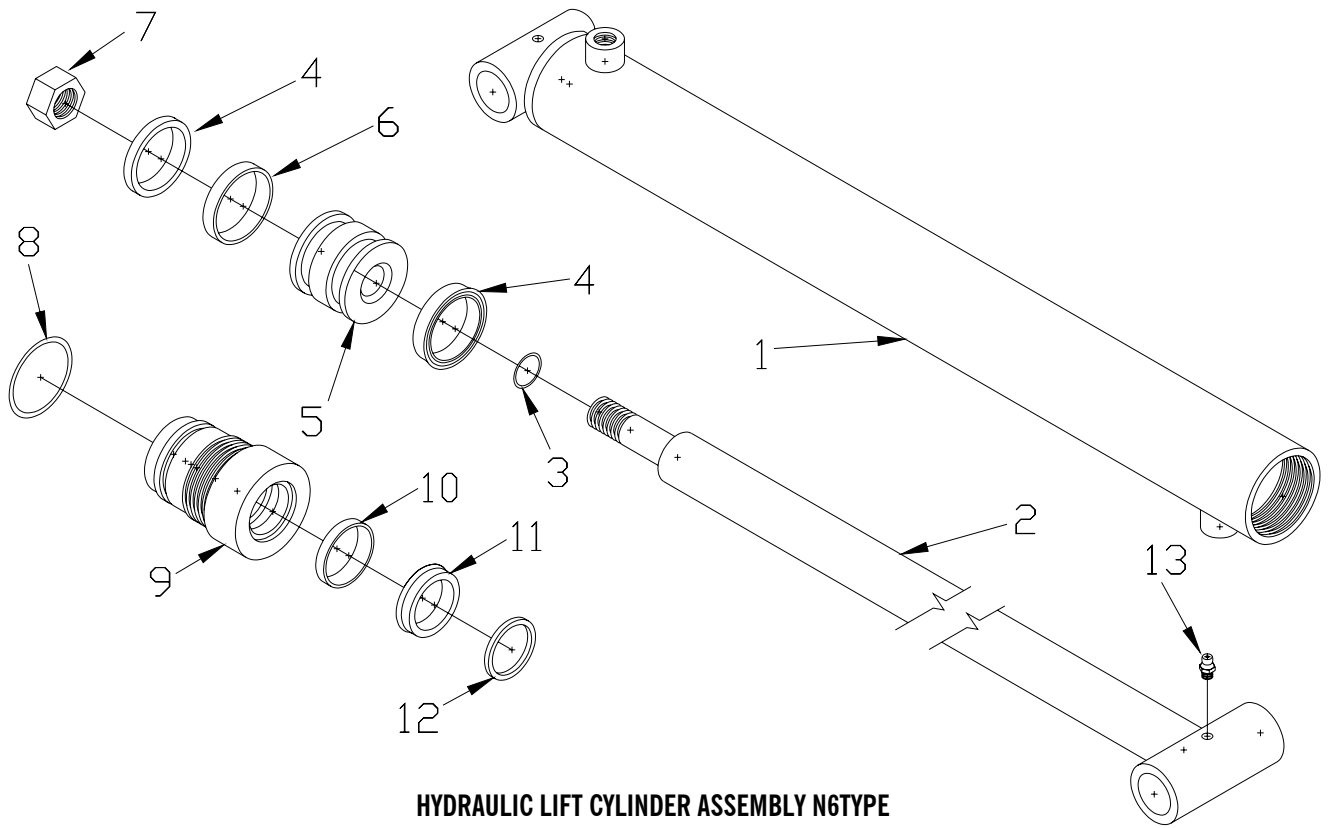
Refer to illustrations on page 29 to help determine cylinder type.



**HYDRAULIC LIFT CYLINDER ASSEMBLY N4 TYPE
(FOR MODELS PRIOR TO SERIAL NO. 40695)**

REF. NO.	PART NO.	DESCRIPTION	CYLINDER CODE 279
1	30TU26	Tube Assembly - 3" x 27"	1
2	10SH9	Shaft - 1-1/2" x 27" - w/3/4" stub	1
3	10OR9	O-Ring - 3/4" I.D. x 7/8" O.D.	1
4	30CU2	U-Cup - 2-1/2" I.D. x 3" O.D. x 3/8"	2
5	30PB2	Plunger Block - 3"	1
6	30WR1	Wear Ring - 2-3/4" I.D. x 3" O.D. x 3/8"	1
7	10NU5	3/4" N.F. Locking Nut	1
8	10OR3	O-Ring - 2-5/8" I.D. x 3" O.D.	1
9	30HP9	Head Plate - 1-1/2" Shaft w/Wear Ring Groove (N4 type)	1
10	10WR1	Head Plate Wear Ring - 1-1/2" I.D. x 1-3/4" O.D. x 1" Wide	1
11	10RS1	Rod Seal - 1-1/2" I.D. x 1-7/8" O.D. x 3/8"	1
12	10WS1	Wiper Seal - 1-1/2" I.D. x 2-1/8" O.D. x 3/16"	1
13	10GN1	1/4" - 28 Grease Fitting	2

Refer to illustrations on page 29 to help determine cylinder type.



**HYDRAULIC LIFT CYLINDER ASSEMBLY N6TYPE
(W/90 DEGREE PORT)**

REF. NO.	PART NO.	DESCRIPTION	CYLINDER CODE
1	30TU26	Tube Assembly - 3" x 27"	1
2	10SH9	Shaft - 1-1/2" x 27" - w/3/4" stub	1
3	10OR9	O-Ring - 3/4" I.D. x 7/8" O.D.	1
4	30CU2	U-Cup - 2-1/2" I.D. x 3" O.D. x 3/8"	2
5	30PB2	Plunger Block - 3"	1
6	30WR1	Wear Ring - 2-3/4" I.D. x 3" O.D. x 3/8"	1
7	10NU5	3/4" N.F. Locking Nut	1
8	10OR3	O-Ring - 2-5/8" I.D. x 3" O.D.	1
9	30HP9	Head Plate - 1-1/2" Shaft w/Wear Ring Groove (N4 type)	1
10	10WR1	Head Plate Wear Ring - 1-1/2" I.D. x 1-3/4" O.D. x 1" Wide	1
11	10RS1	Rod Seal - 1-1/2" I.D. x 1-7/8" O.D. x 3/8"	1
12	10WS1	Wiper Seal - 1-1/2" I.D. x 2-1/8" O.D. x 3/16"	1
13	10GN1	1/4" - 28 Grease Fitting	2

Refer to illustrations on page 29 to help determine cylinder type.

**HYDRAULIC LIFT CYLINDER- N6 TYPE
(FOR MODELS WITH SERIAL NO. 40695 & UP)**

REF. NO.	PART NO.	DESCRIPTION	CYLINDER CODE 279
1	30TU35	Tube Assembly - 3" x 27" - N6 Type	1
2	10SH9	Shaft - 1-1/2" x 27" - w/3/4" stub	1
3	100R9	O-Ring - 1" I.D. x 1-1/8" O.D..	1
4	30CU2	U-Cups - 2-1/2" I.D. x 3" O.D. x 3/8"	2
5	30PB2	Piston Block - 3"	1
6	30WR1	3" Wear Ring - 2-3/4" I.D. x 3" O.D. x 3/8"	1
7	10NU5	3/4" N.F. Locking Nut	1
8	100R3	O-Ring - 2-5/8" I.D. x 3" O.D.	1
9	30HP11	Head Plate - 1-1/2" Shaft w/Wear Ring Groove - 3" Under Head Length	1
10	10WR1	Head Plate Wear Ring - 1-1/2" I.D. x 1-3/4" O.D. x 1" Wide	1
11	10RS1	Rod Seal - 1-1/2" I.D. x 1-7/8" O.D. x 3/8"	1
12	10WS1	Wiper Seal - 1-1/2" I.D. x 2-1/8" O.D. x 3/16"	1
13	10GN1	1/4" - 28 Grease Fitting	2

Refer to illustrations on page 29 to help determine cylinder type.

EZEE-ON CYLINDER REPAIR SEAL KIT CODES

CODE 30 = 3" BORE

PART NO. 3015HR - N4

N4 - Thread Type Head

HR = Wear Ring in Head and Piston

15 = 1-1/2" Shaft

CYLINDER SEAL KITS

KIT NO.	CONTENTS			FITS CYLINDER CODE NO.
3015HR-N4-P	2 -	30CU2	2-1/2" I.D. x 3" O.D. x 3/8" U-Cup	272
	1 -	10RS1	1-1/2" I.D. x 1-7/8" O.D. x 3/8" Rod Seal	279
	1 -	10WR1	1-1/2" I.D. x 1-7/8" O.D. x 3/16" Wiper Seal	280
	1 -	30WR1	2-3/4" I.D. x 3" O.D. x 3/8" Wear Ring	
	1 -	10WR1	1-1/2" I.D. x 1-3/4" O.D. x 1" Wear Ring	
	1 -	100R27	2-5/8" I.D. x 3" O.D. O-Ring - 90 Durometer	
	1 -	100R21	1" I.D. x 1-1/8" O.D. O-Ring	
	1 -	100R9	3/4" I.D. x 7/8" O.D. O-Ring	
	3015HR-N6	2 -	30CU2	2-1/2" I.D. x 3" O.D. x 3/8" U-Cup
1 -		10RS1	1-1/2" I.D. x 1-7/8" O.D. x 3/8" Rod Seal	313
1 -		10WS1	1-1/2" I.D. x 1-7/8" O.D. x 3/16" Wiper Seal	
1 -		30WR1	2-3/4" I.D. x 3" O.D. x 3/8" Wear Ring	
1 -		10WR1	1-1/2" I.D. x 1-3/4" O.D. x 1" Wear Ring	
1 -		100R3	2-5/8" I.D. x 3" O.D. O-Ring	
1 -		100R21	1" I.D. x 1-1/8" O.D. O-Ring	
1 -		100R9	3/4" I.D. x 7/8" O.D. O-Ring	
2515h6		1-	25CU2	2" I.D. x 2-1/2" O.D. x 3/8" U-Cups
	1-	10RS1	1-1/2" I.D. x 1-7/8" O.D. x 3/8" Rod Seal	
	1-	10WS1	1-1/2" I.D. x 1-7/8" O.D. x 3/16" Wiper Seal	
	2-	25WR1	2-1/4" I.D. x 2-1/2" O.D. x 3/8" Wear Ring	
	1-	100R20	2-1/8" I.D. x 2-1/2" O.D. O-Ring	
	1-	100R9	3/4" I.D. x 7/8" O.D. O-Ring	

HEAD TYPE IDENTIFICATION

