

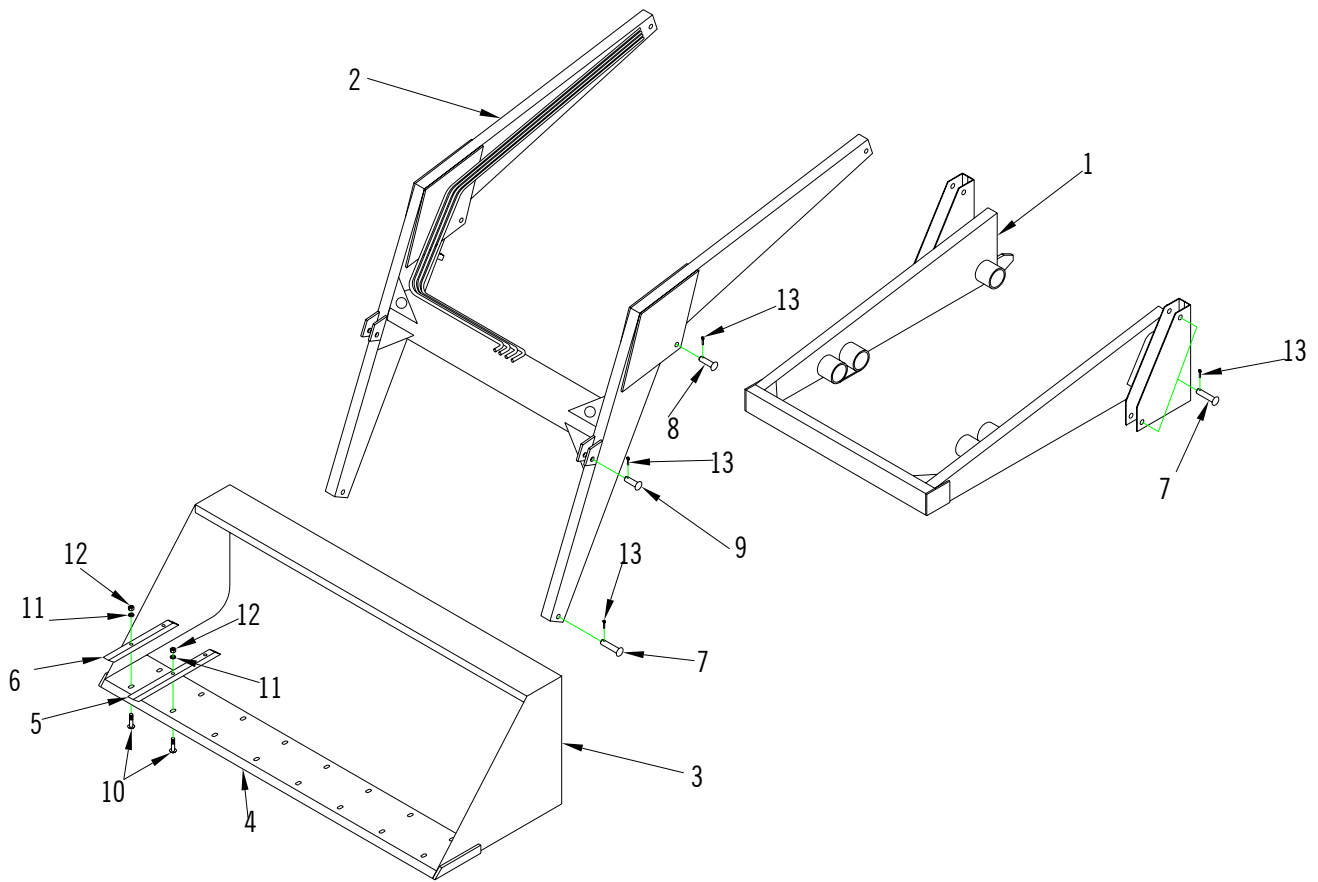
EZEE-ON LOADER PARTS LIST

	PAGE
Paints and Decals	14
H-Frame, Yoke, & Bucket	15
Hydraulic System	16
Cylinder Part Number Code	18
Bucket Cylinder - 2" x 12" N5 A-Cup Type	19
Lift Cylinder - 2-1/4" x 24" N6 Type, 2" x 12" N5 U-Cup Type	20
Cylinder Repair Seal Kit Code	21
Cylinder Seal Kit	21

PAINT & DECALS

PART NO.	DESCRIPTION	QTY. REQ'D
L415	Ezee-On Decal (8-1/2" x 1-1/2")	3
L732	"2060" Model Number Decal	2
L014/L017	Loader Caution Decal – (5-3/4" x 7-7/8")	1
A75764	"Read Manual Decal" – (2-5/16" x 4-1/2")	1
L3216	"Falling Load Decal" – (3-1/4" x 5-1/4")	3
L015	Black Paint - 1 quart	*
L016	Flat Black Paint - 1/2 pint	*

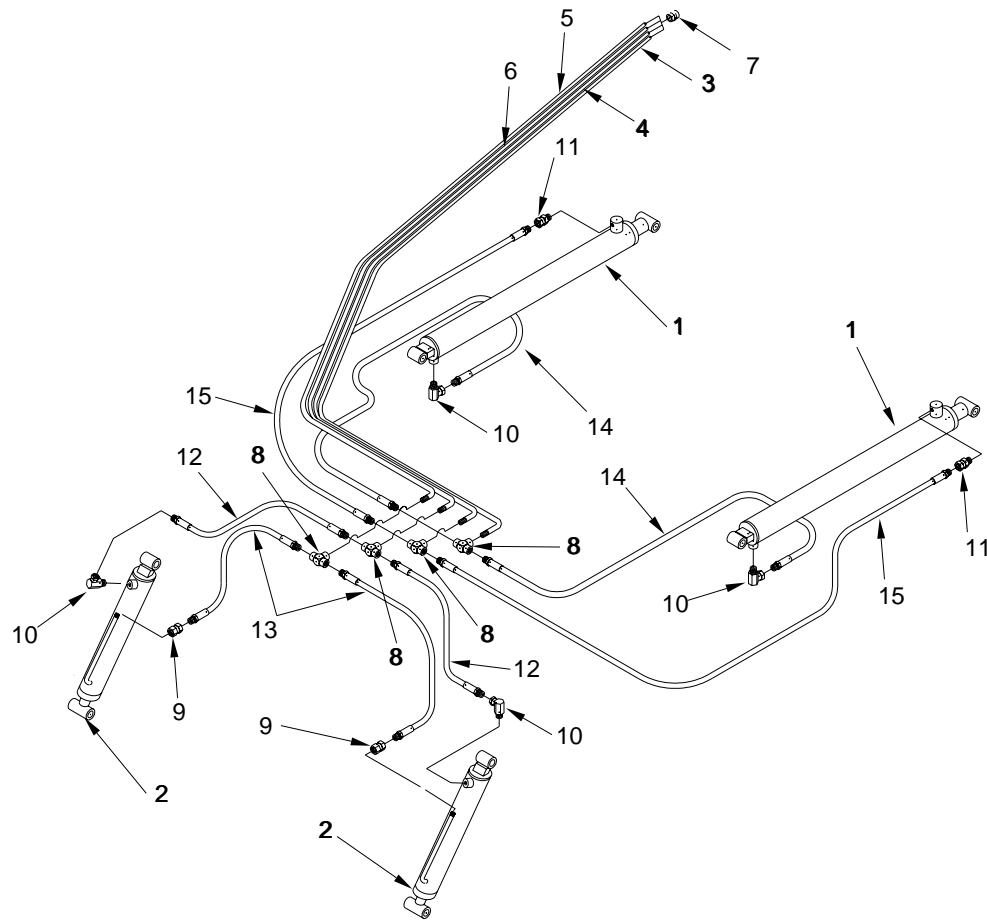
* As Required



H-FRAME, YOKE, BUCKET & EZEE-A-TACH SYSTEM

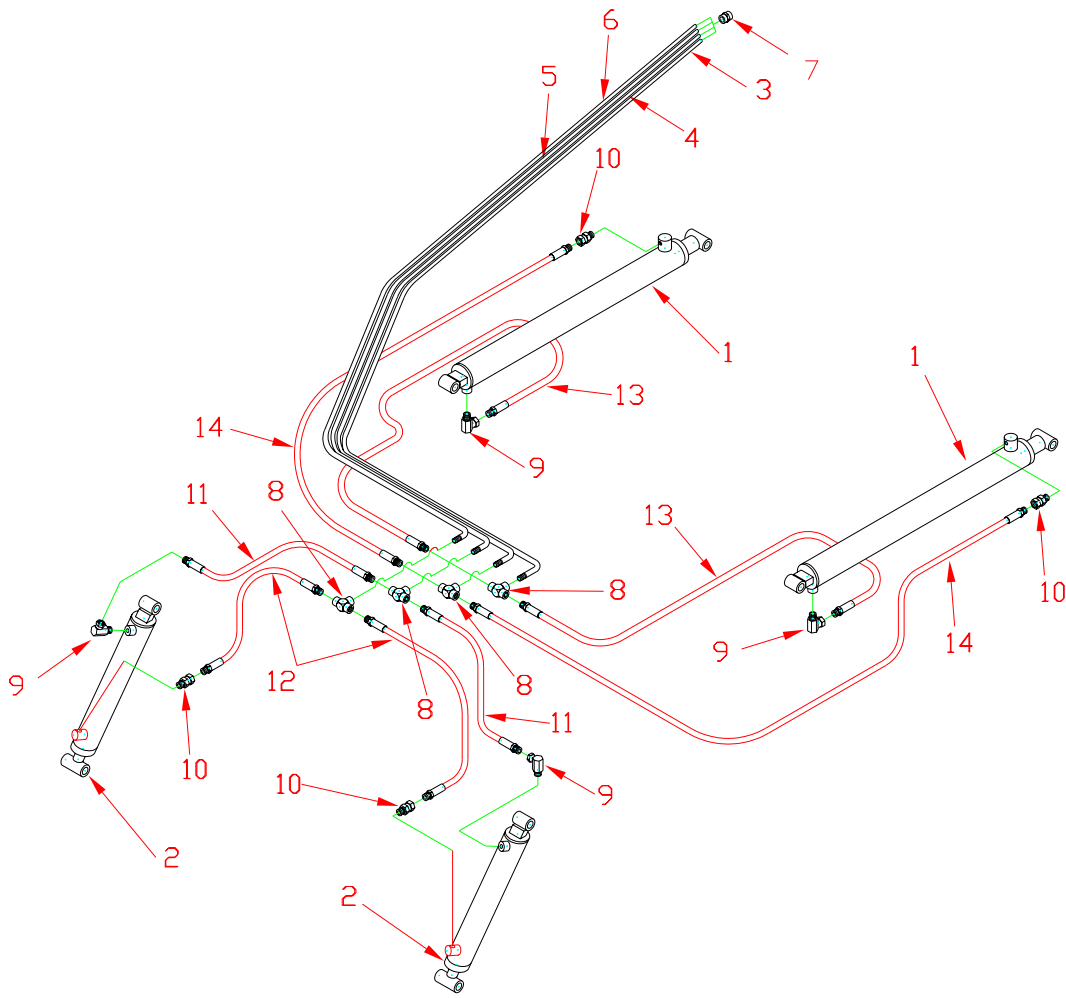
REF. NO.	PART NO.	DESCRIPTION	QTY. REQ'D
1	LB722	2060-1 Narrow Yoke Assembly c/w Pins	1
	LB723	2060-2 Wide Yoke Assembly c/w Pins	1
	LB724	2060-3 Extra Wide Yoke Assembly c/w Pins	1
	LB725	2060-4 Super Wide Yoke Assembly c/w 4 Pins	1
2	LB721	2060 Main Frame Assembly c/w Pins	1
3	LB695	54" Bucket Less Teeth	1
	LB696	60" Bucket Less Teeth	1
	LB697	72" Bucket Less Teeth	1
Back of Bucket 4	L652	Bucket Attaching Lug (Weld-On)	4
	L647	54" Bucket Blade (Weld-On)	1
	L41	60" Bucket Blade (Weld-On)	1
	L42	72" Bucket Blade (Weld-On)	1
5	L51	Standard Bucket Tooth (19-3/4" Overall Length)	*
	L52	Extra Long Bucket Tooth (31-3/4" Overall Length)	*
6	L1680	Corner Bucket Tooth (15-1/2" Overall Length)	2
7	L667	3/4" x 3-3/4" (19.0mm x 95.3mm) Long Pin	8
	L643	3/4" x 2-7/8" (19.0mm x 72.9mm) Long Pin	2
8	L665	3/4" x 2-5/8" (19.0mm x 66.5mm) Long Pin	2
10	L57	7/16" x 2-1/2" N.C. (10.9mm x 57.2mm) Carriage Head Bolt	*
		7/16" (10.9mm) Lockwasher	*
		7/16" N.C. (10.9mm) Hex Nut	*
13 Not Shown		3/16" x 1-1/4" (4.57mm x 31.8mm) Cotter Pin	12
	10GN1	1/4" - 28 (6.35mm) Grease Fitting	4

* as required



HYDRAULIC SYSTEM
(S/N - 45493 and Prior)

REF. NO.	PART NO.	DESCRIPTION	QTY. REQ'D
1	284	2-1/4" x 24" Lift Cylinders - See Cylinder Parts List (Instructions on Page 18)	2
2	155	2" x 12" Bucket Cylinders - See Cylinder Parts List (Instructions on Page 18)	2
3	L728	Bottom 1 Hydraulic Oil Line	1
4	L729	Bottom 2 Hydraulic Oil Line	1
5	L730	Bottom 3 Hydraulic Oil Line	1
6	L731	Bottom 4 Hydraulic Oil Line	1
7	DL5280	3/8" Connector Union	4
8	DL5282	3/8" x 3/8" x 3/8" Tee	4
9	DL29	3/8" Female-Female Swivel Adapter	2
10	DL9769	3/8" x 90 Degree Swivel Street Elbow	4
11	L1619	3/8" Male-Female Swivel Adapter	2
12	L3041	3/8" x 27" Hydraulic Hose	2
13	L2930	3/8" x 30" Hydraulic Hose	2
14	L3042	3/8" x 57" Hydraulic Hose	2
15	L3043	3/8" x 64" Hydraulic Hose	2



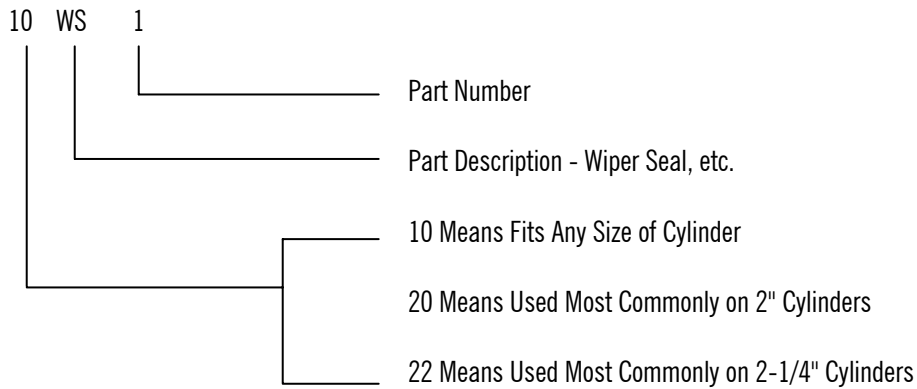
**HYDRAULIC SYSTEM
(S/N - 45494 and After)**

REF. NO.	PART NO.	DESCRIPTION	QTY. REQ'D
1	284	2-1/4" x 24" Lift Cylinders - See Cylinder Parts List (Instructions on Page 18)	2
2	314	2" x 12" Bucket Cylinders - See Cylinder Parts List (Instructions on Page 18)	2
3	L728	Bottom 1 Hydrdraulic Oil Line	1
4	L729	Bottom 2 Hydraulic Oil Line	1
5	L730	Bottom 3 Hydraulic Oil Line	1
6	L731	Bottom 4 Hydraulic Oil Line	1
7	DL5280	3/8" Connector Union	4
8	DL5282	3/8" x 3/8" x 3/8" Tee	4
9	DL9769	3/8" x 90 Degree Swivel Street Elbow	4
10	L1619	3/8" Male-Female Swivel Adapter	4
11	L3041	3/8" x 27" Hydraulic Hose	2
12	L4349	3/8 x 39" Hydraulic Hose	2
13	L3042	3/8" x 57" Hydraulic Hose	2
14	L3043	3/8" x 64" Hydraulic Hose	2

CYLINDER PARTS LIST

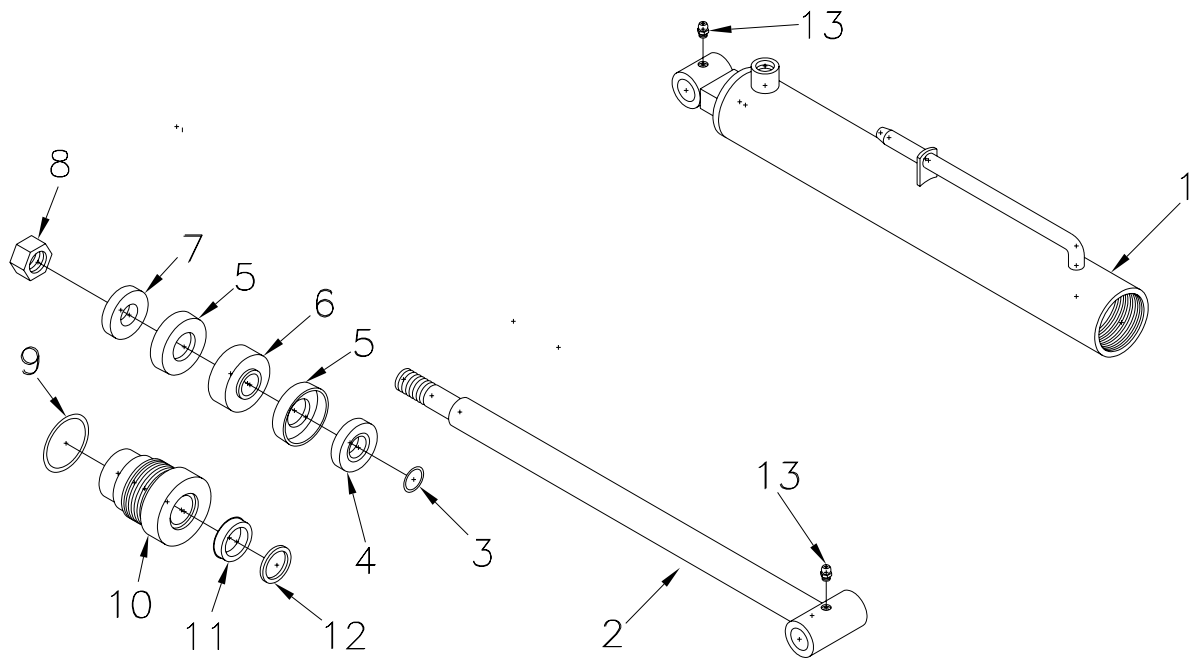
1. Identify your cylinder as to code number of complete cylinder. Use the complete assembly code numbers listed below and match up diameter, stroke, etc.
2. Once the code number has been established then locate type of cylinder, N4 or N6 further in book and use correct reference number and column to locate part number.

CYLINDER PART NUMBER CODE



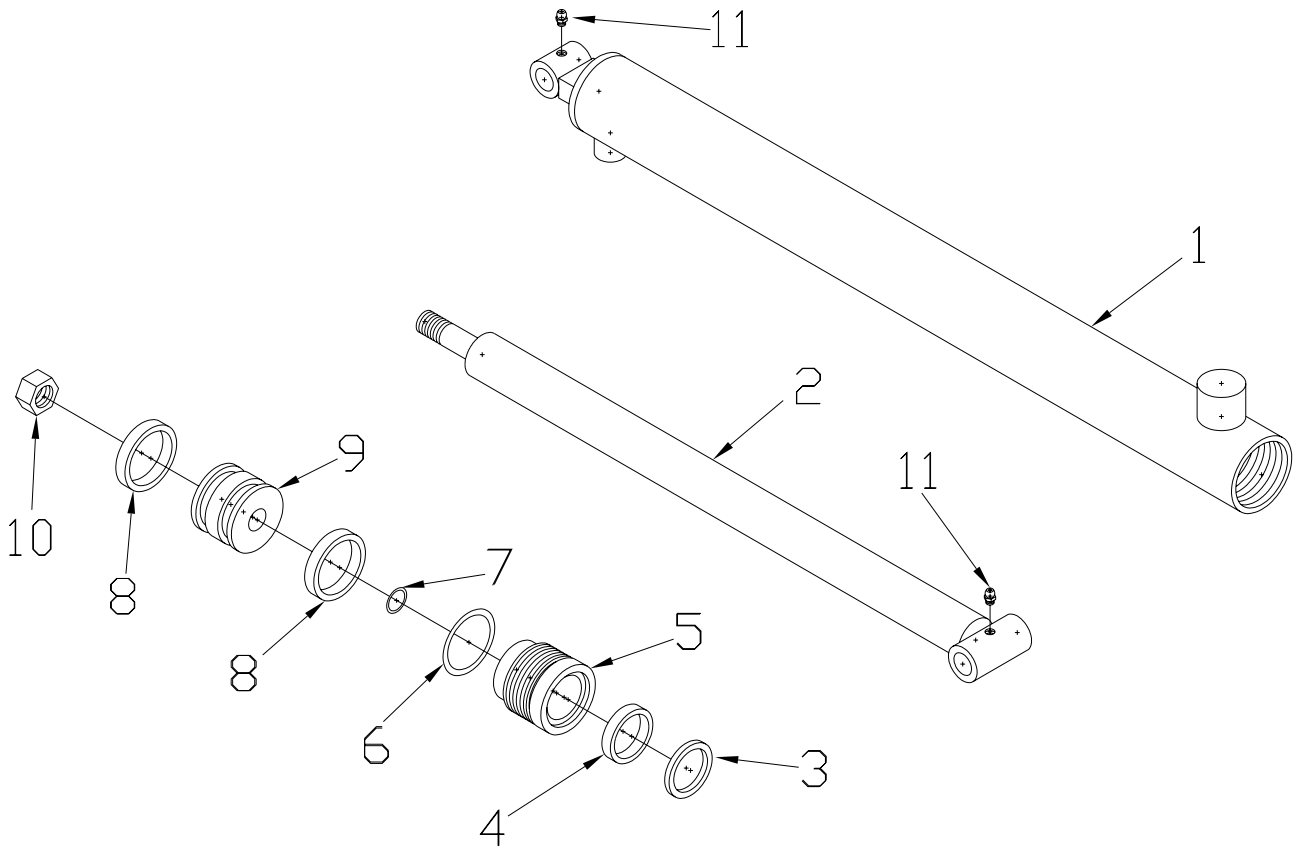
MODEL 2060 CYLINDER SPECIFICATIONS

CODE NO.	DIAMETER	STROKE	C.C. LENGTH	SHAFT DIAMETER	TYPE	APPLICATION
155	2"	12"	20-1/2"	1"	N5 (A – Cup)	Bucket
284	2-1/4"	24"	33-1/8"	1-1/2"	N6 (U – Cup)	Lift
314	2"	12"	20-1/2"	1"	N5 (U – Cup)	Bucket



BUCKET CYLINDER - 2" x 12" (N5) A – Cup TYPE – (#155)

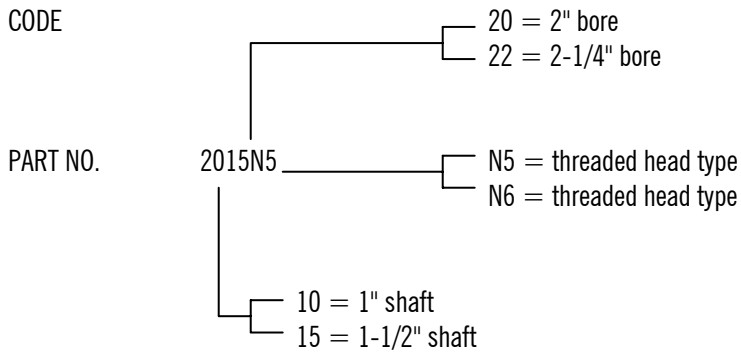
REF. NO.	PART NO.	DESCRIPTION	QTY. REQ'D
			155
1	20TU28	Tube Assembly - 2" x 12" - (Oil Line Type)	1
2	10SH15	Shaft - 1" x 12"	1
3	100R9	O-Ring - 1/16" x 7/8" O.D.	1
4	20FP2	Filler Plate - With Machined Seat For O-Ring	1
5	20CU1	2" Cup	2
6	20BP1	Back-Up Plate	1
7	20FP1	Filler Plate	1
8	10HU5	Lock Nut - 3/4" N.F.	1
9	100R4	O-Ring - 1/8" x 2" O.D.	1
10	20HP7	Head Plate	1
11	10RS4	Rod Seal - 1" I.D.	1
12	10WS4	Wiper Seal - 1" I.D.	1
13	10GN1	1/4" - 28 Grease Fitting	2



LIFT CYLINDER - 2-1/4" x 24" (N6) – U-Cup TYPE – (#284)
BUCKET CYLINDER - 2" x 12" (N5) – U-Cup TYPE – (#314)

REF. NO.	PART NO.	DESCRIPTION	QTY. REQ'D	
			314	284
1	20TU37 22TU2	Tube Assembly – 2" x 12" Tube Assembly – 2-1/4" x 24"	1	1
2	10SH15 10SH61	Shaft – 1" x 12" Shaft – 1-1/2" x 24"	1	1
3	10WS4 10WS1	Wiper Seal – 1" I.D. Wiper Seal – 1-1/2" I.D.	1	1
4	10RS4 10RS1	Rod Seal – 1" I.D. Rod Seal – 1-1/2" I.D.	1	1
5	20HP7 22HP1	Head Plate – 2" O.D. x 1" I.D. Head Plate – 2-1/4" O.D. x 1-1/2" I.D.	1	1
6	10OR4 10OR15	O-Ring – 1/8" x 2" O.D. O-Ring – 3/16" x 2-1/4" O.D.	1	1
7	10OR9	O-Ring – 1/16" x 7/8" O.D.	1	1
8	20CU2 22CU1	U-Cup – 2" O.D. U-Cup – 2-1/4" O.D.	2	2
9	20PB1 22PB1	Piston Block – 2" O.D. x 3/4" I.D. Piston Block – 2-1/4" O.D. x 3/4" I.D.	1	1
10	10NU5	Lock Nut – 3/4" N.F.	1	1
11	10GN1	1/4" – 28 Grease Fitting	2	2

EZEE - ON CYLINDER REPAIR SEAL KIT CODES



CYLINDER SEAL KIT

KIT NO.	CONTENTS	FITS CYLINDER CODE NO.
2010 N5	2 - 20CU1 A-Cups - 2" O.D. 1 - 100R4 O-ring - 1/8" x 2" O.D. 1 - 10RS4 Rod Seal - 1" I.D. 1 - 10WS4 Wiper Seal - 1" I.D. 1 - 100R9 O-ring - 1/16" x 7/8" I.D.	155
2010 N5 - U	2 - 20CU2 U-Cups - 2-1/4" O.D. 1 - 100R4 O-ring - 1/8" x 2" O.D. 1 - 10RS4 Rod Seal - 1" I.D. 1 - 10WS4 Wiper Seal - 1" I.D. 1 - 100R9 O-ring - 1/16" x 7/8" I.D.	314
2215 N6	2 - 22CU1 U-Cups - 2-1/4" O.D. 1 - 100R15 O-ring - 3/16" x 2-1/4" O.D. 1 - 10RS1 Rod Seal - 1-1/2" I.D. 1 - 10WS1 Wiper Seal - 1-1/2" I.D. 1 - 100R9 O-ring - 1/16" x 7/8" I.D.	223