

MODEL 2040 PARTS INDEX

	PAGE
H-Frame, Yoke & Bucket	14
Hydraulic System	15
Cylinders	16
Cylinder Seal Kit	19

PAINT & DECALS

PART NO.	DESCRIPTION	QTY. REQ'D
L010	Ezee-On Decals	3
L014	Caution Decal	1
L001	Ezee-On Yellow Paint (1 Quart Can)	*
L002	Ezee-On Yellow Paint (1/2 Pint Can)	*
L015	Flat Black Paint (1 Quart Can)	*
L016	Flat Black Paint (1/2 Pint Can)	*

* As Required

H-FRAME, YOKE & BUCKET

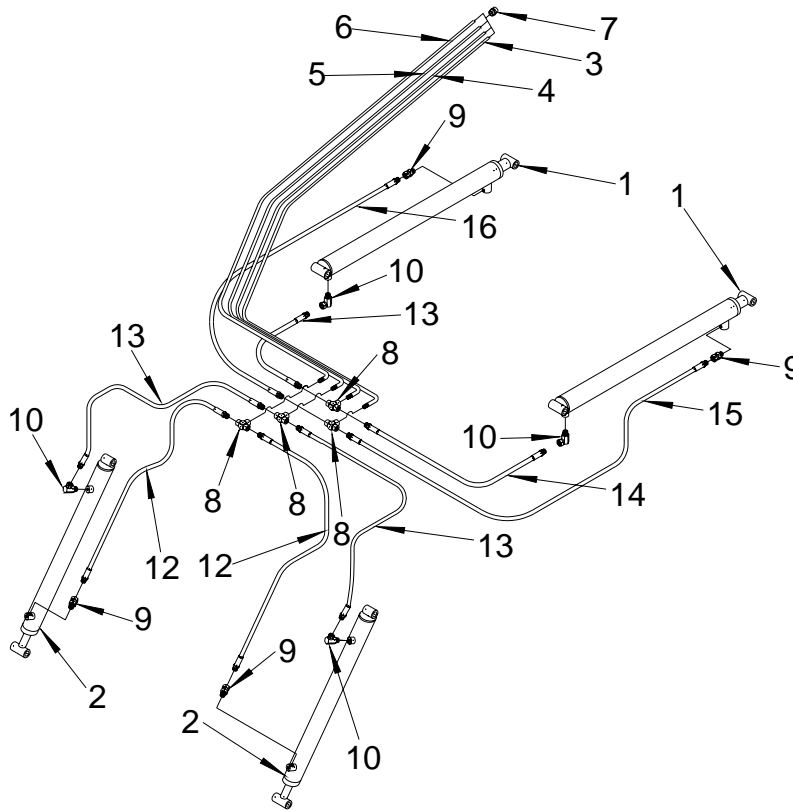
REF. NO.	PART NO.	DESCRIPTION	QTY REQ'D
1	LB460	2040 Yoke Assembly, Narrow Yoke c/w Pins	*
	LB450	2040 Yoke Assembly, Wide Yoke c/w Pins	*
	LB470	2040 Yoke Assembly, Extra Wide Yoke c/w Pins	*
	LB465	2040 Yoke Assembly, Wide-A Yoke c/w Pins (Yanmar)	*
2	LB490	2040 Main Frame Assembly c/w Pins	*
3	LB365	48" Bucket Assembly c/w 4 Pins	*
	LB375	54" Bucket Assembly c/w 4 Pins	*
	LB380	60" Bucket Assembly c/w 4 Pins	*
Back of Bucket	L350	Bucket Attaching Lug (Weld-On)	4
4	L348	48" Bucket Blade (Weld-On)	*
	L358	54" Bucket Blade (Weld-On)	*
	L363	60" Bucket Blade (Weld-On)	*
5	L667	3/4" x 3-11/16" Pin	8
6	L643	3/4" x 2-13/16" Pin	2
7	L665	3/4" x 2-9/16" Pin	2
8		3/16" x 1-1/4" Cotter Pin	12
Not Shown	10GN1	1/4" - 28 Grease Fitting	8

* As Required

**HYDRAULIC SYSTEM
(FOR LOADERS WITH S/N 46846 AND PRIOR)**

REF. NO.	PART NO.	DESCRIPTION	QTY REQ'D
1	163	Lift Cylinder - See Cylinder Parts List Instructions on Page 17	*
	165	Lift Cylinder - See Cylinder Parts List Instructions on Page 17	*
2	244	Bucket Cylinder - See Cylinder Parts List Instructions on Page 17	2
3	L485	Bottom 1 Hydraulic Oil Line	1
4	L486	Bottom 2 Hydraulic Oil Line	1
5	L487	Bottom 3 Hydraulic Oil Line	1
6	L488	Bottom 4 Hydraulic Oil Line	1
7	DL5280	3/8" Connector Union	4
8	DL5282	3/8" x 3/8" x 3/8" Tee	4
9	DL29	3/8" Female-Female Swivel	2
10	DL9769	3/8" x 90 Degree Swivel Street Elbow	4
11	DL5284	3/8" x 90 Degree Swivel Elbow	2
12	L2928	1/4" x 18" Hydraulic Hose - w/3/8" Ends	2
13	L2929	1/4" x 20" Hydraulic Hose - w/3/8" Ends	2
14	L3017	1/4" x 32" Hydraulic Hose - w/3/8" Ends	1
15	L3019	1/4" x 35" Hydraulic Hose - w/3/8" Ends	1
16	L3020	1/4" x 38" Hydraulic Hose - w/3/8" Ends	1
17	L3021	1/4" x 40" Hydraulic Hose - w/3/8" Ends	1

* As Required



**HYDRAULIC SYSTEM (w/90 DEGREE PORT CYLINDER)
(FOR LOADERS WITH S/N 46847 AND AFTER)**

REF. NO.	PART NO.	DESCRIPTION	QTY REQ'D
1		Lift Cylinder - See Cylinder Parts List Instructions on Page 17	*
		Lift Cylinder - See Cylinder Parts List Instructions on Page 17	*
2		Bucket Cylinder - See Cylinder Parts List Instructions on Page 17	2
3	L485	Bottom 1 Hydraulic Oil Line	1
4	L486	Bottom 2 Hydraulic Oil Line	1
5	L487	Bottom 3 Hydraulic Oil Line	1
6	L488	Bottom 4 Hydraulic Oil Line	1
7	DL5280	3/8" Connector Union	4
8	DL5282	3/8" x 3/8" x 3/8" Tee	4
9	L1619	3/8" male-Female Swivel	4
10	DL9769	3/8" x 90 Degree Swivel Street Elbow	4
11	L2928	1/4" x 18" Hydraulic Hose - w/3/8" Ends	2
12	L3095	1/4" x 28" Hydraulic Hose - w/3/8" Ends	2
13	L3017	1/4" x 32" Hydraulic Hose - w/3/8" Ends	1
14	L3019	1/4" x 35" Hydraulic Hose - w/3/8" Ends	1
15	L4352	1/4" x 56" Hydraulic Hose - w/3/8" Ends	1
16	L4353	1/4" x 58" Hydraulic Hose - w/3/8" Ends	1

EZEE-ON LOADER CYLINDER PARTS LIST

1. Identify your cylinder as to code number of complete cylinder. Use the complete assembly code number, listed below, and match up diameter, stroke, etc.
2. Once the code number has been established then locate cylinder further to book and use correct reference number and column to locate part number.

EZEE-ON CYLINDER PART NUMBER CODE

10 WS 1

Part Number

Part Description, Wiper Seal Kit

10 - Means Fits Many Sizes of Cylinders

17 - Means Used Most Commonly on 1-3/4" Cylinder

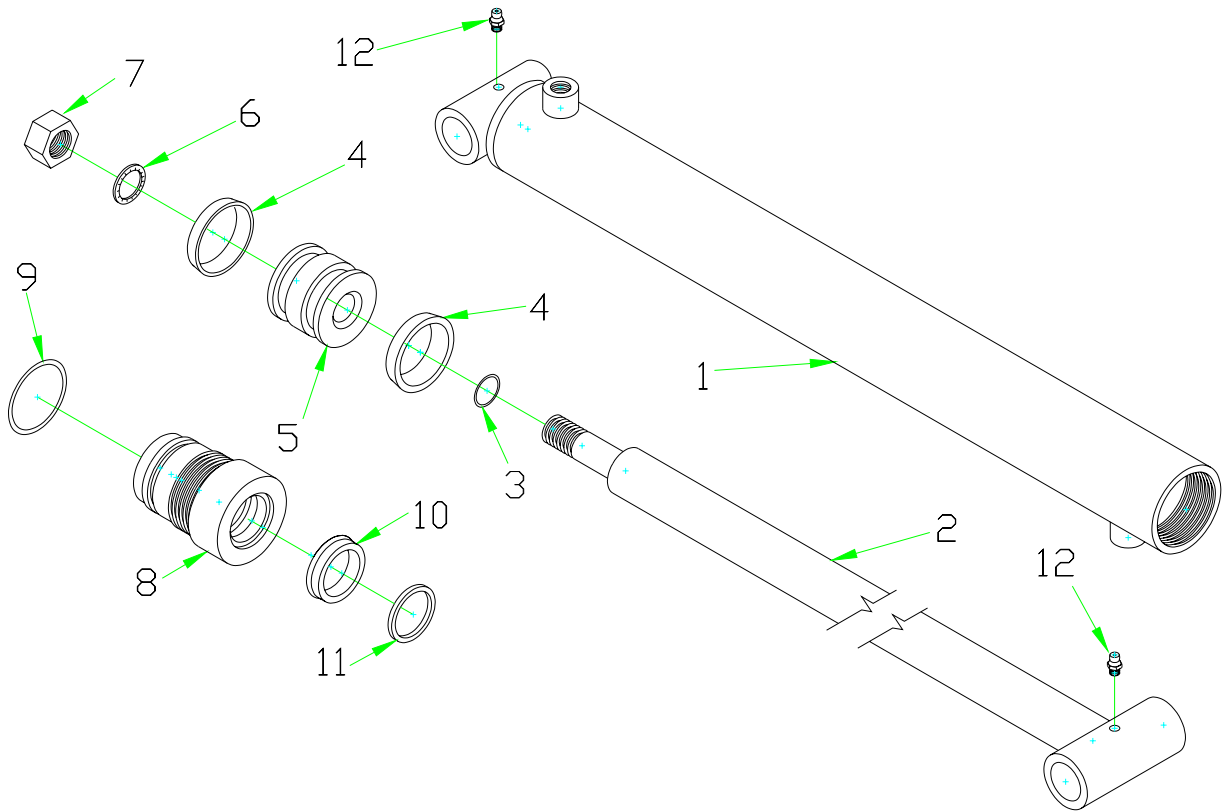
MODEL 2030 CYLINDER SPECIFICATIONS

CODE	DIAMETER	STROKE	C-C LENGTH	SHAFT DIAMETER	TYPE	APPLICATION	PAGE NO.
244	1-3/4"	12	20-1/2"	1-1/4"	N5 (A-Cup)	Bucket	
295	1-3/4"	12	20-1/2"	1"	N5 (U-Cup)	Bucket	
309	1-3/4"	12	20-1/2"	1"	N5 (U-Cup) w/90 Degree Port	Bucket	
163	1-3/4"	21	29-1/2"	1-1/4"	N5 (A-Cup)	Lift	
311	1-3/4"	21	29-1/2"	1-1/4"	N5 (U-Cup) w/90 Degree Port	Lift	
165	2"	21	29-1/2"	1-1/4"	N5 (A-Cup)	Lift	

HYDRAULIC CYLINDER - BUCKET

REF. NO.	PART NO.	DESCRIPTION	CYLINDER CODE
			295
1	17TU1	Tube Assembly - 1-3/4" x 12"	1
2	10SH15	Shaft - 1" x 12"	1
3	10OR9	O-Ring - 3/4" I.D. x 7/8" O.D.	1
4	17CU2	U-Cup - 1-3/4" O.D.	2
5	17PB1	1-3/4" O.D. Piston Block	1
6	10SW1	Star Washer - 3/4" I.D.	1
7	10NU1	3/4" N.F. Nut	1
8	17HP3	Head Plate - 1" Shaft	1
9	10OR5	O-Ring - 1-1/2" I.D. x 1-3/4" O.D.	1
10	10RS4	Rod Seal - 1" I.D.	1
11	10WS4	Wiper Seal - 1" I.D.	1
12	10GN1	1/4" - 28 Grease Fitting	2

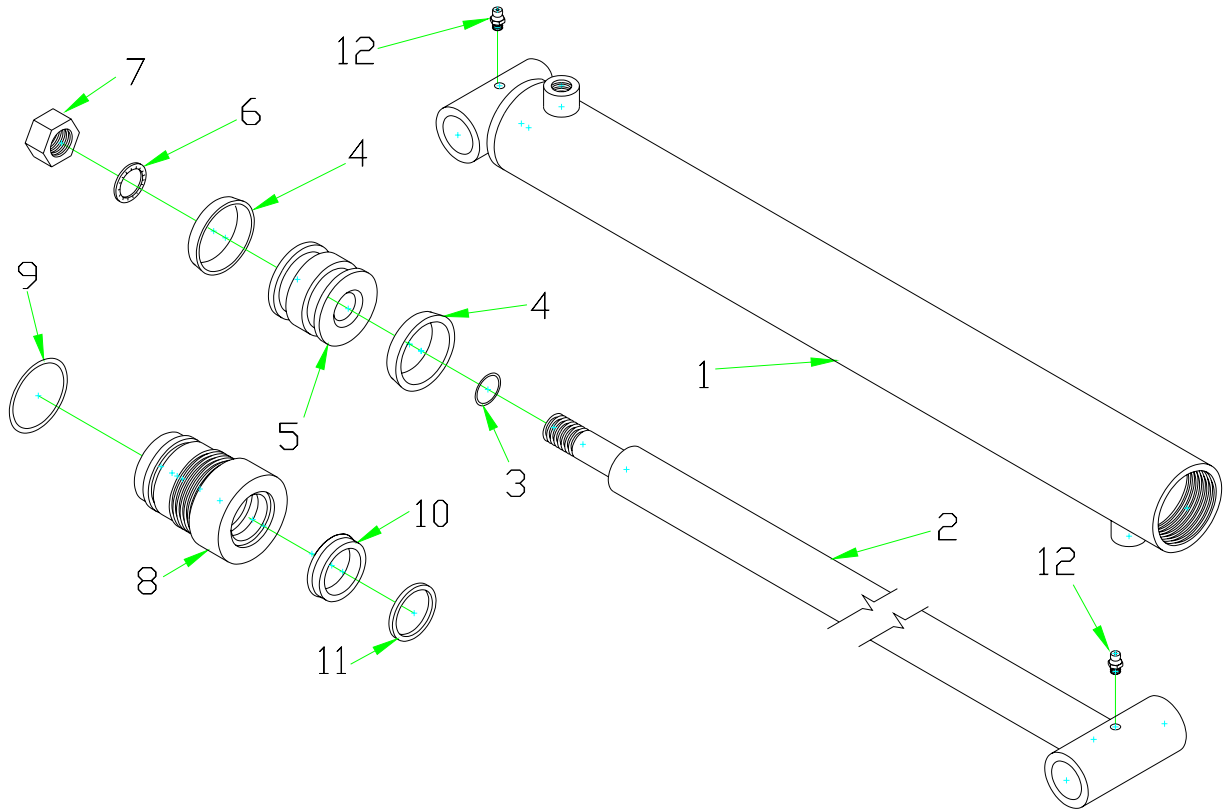
SEAL KIT 1710 U-N5



**HYDRAULIC CYLINDER - BUCKET
(WITH 90 DEGREE PORT)**

REF. NO.	PART NO.	DESCRIPTION	CYLINDER CODE
			309
1	17TU11	Tube Assembly - 1-3/4" x 12"	1
2		Shaft - 1" x 12"	1
3	100R9	O-Ring - 3/4" I.D. x 7/8" O.D.	1
4	17CU2	U-Cup - 1-3/8" I.D. x 1-3/4" O.D. x 5/16" Deep	2
5	17PB1	1-3/4" O.D. Piston Block	1
6	10SW1	Star Washer - 3/4" I.D.	1
7	10NU1	3/4" N.F. Nut	1
8	17HP3	Head Plate - 1-3/4" O.D. x 1" I.D.	1
9	100R5	O-Ring - 1-1/2" I.D. x 1-3/4" O.D.	1
10	10RS4	Rod Seal - 1" I.D.	1
11	10WS4	Wiper Seal - 1" I.D.	1
12	10GN1	1/4" - 28 Grease Fitting	2

SEAL KIT 1710U-N5



HYDRAULIC LIFT CYLINDER

REF. NO.	PART NO.	DESCRIPTION	CYLINDER CODE
			311
1	17TU1	Tube Assembly - 1-3/4" x 21" (w/90 Degree Port)	1
2	10SH31	Shaft - 1-1/4" x 21"	1
3	10OR9	O-Ring - 3/4" I.D. x 7/8" O.D.	1
4	17CU2	U-Cups - 1-3/8" I.D. x 1-3/4" O.D. x 5/16" Deep	2
5	17PB1	1-3/4" O.D. Piston Block	1
6	10SW1	Star Washer - 3/4" I.D.	1
7	10NU1	3/4" N.F. Nut	1
8	20HP8	Head Plate - 1-3/4" O.D. x 1-1/4" I.D.	1
9	10OR4	O-Ring - 1-1/2" I.D. x 1-3/4" O.D.	1
10	10RS5	Rod Seal - 1-1/4" I.D.	1
11	10WS5	Wiper Seal - 1-1/4" I.D.	1
12	10GN1	1/4" - 28 Grease Fitting	2

1712 U-N5

HYDRAULIC CYLINDER

REF. NO.	PART NO.	DESCRIPTION	CYLINDER CODE		
			163	168	244
1	17TU12	Tube Assembly - 1-3/4" x 12" (w/90 Degree Port)	-	-	1
	17TU9	Tube Assembly - 1-3/4" x 21"	1	-	-
	17TU34	Tube Assembly - 2" x 21"	-	1	-
2	10SH31	Shaft - 1-1/4" x 21"	1	1	-
	10SH48	Shaft - 1-1/4" x 12"	1	-	1
3	10OR9	O-Ring - 3/4" I.D. x 7/8" O.D.	1	1	1
4	17FP1	Filler Plate - 1-3/4"	1	-	1
	20FP1	Filler Plate - 2"	-	1	-
5	17CU1	A-Cups - 1-3/4"	2	-	1
	20CU1	A-Cups - 2"	-	2	-
6	17BP1	Back-up Plate - 1-3/4"	1	-	1
	20BP1	Back-up Plate - 2"	-	1	-
7	10SW1	Star washer - 3/4" I.D.	1	1	1
8	10NU1	3/4" N.F. Nut	1	1	1
9	17HP5	Head Plate - 1-3/4" O.D. x 1-1/4" I.D.	1	-	1
	20HP8	Head Plate - 2" O.D. x 1-1/4" I.D.	-	1	-
10	10OR5	O-Ring - 1-1/2" I.D. x 1-3/4" O.D.	1	-	1
	10OR4	O-Ring - 1-3/4" I.D. x 2" O.D.	-	1	-
11	10RS5	Rod Seal - 1-1/4" I.D.	1	1	1
12	10WS5	Wiper Seal - 1-1/4" I.D.	1	1	1
13	10GN1	1/4" - 28" Grease Fitting	2	2	2
14	17FP2	Filler Plate	1	-	1
	20FP2	Filler Plate	-	1	-

SEAL KIT 1712N5 - CYLINDER CODE #163

SEAL KIT 2012N5 - CYLINDER CODE #168

EZEE-ON CYLINDER REPAIR SEAL KIT

CODE 17 = 1-3/4" Bore
 20 = 2" Bore

PART NO 1712N5-----N5 = THREADED HEAD TYPE

 12 = 1-1/4" Shaft

CYLINDER SEAL KIT

KIT NO.	CONTENTS	FITS CYLINDER CODE NO.
1710N5-U	2 - 17CU2 1-3/8" I.D. x 1-3/4" O.D. x 5/16" Deep U-Cup 1 - 100R9 3/4" I.D. x 7/8" O.D. O-Ring 1 - 100R5 1-1/2" x 1-3/4" O.D. O-Ring 1 - 10RS4 1" I.D. Rod Seal 1 - 10WS4 1" I.D. Wiper Seal	295, 309
1712N5	2 - 17CU1 1-3/4" A-Cups 1 - 100R9 3/4" I.D. x 7/8" O.D. O-Ring 1 - 100R5 1-1/2" I.D. x 1-3/4" O.D. O-Ring 1 - 10RS5 1-1/4" I.D. Rod Seal 1 - 10WS5 1-1/4" I.D. Wiper Seal	244, 163
1712N5-U	2 - 17CU2 1-3/8" I.D. x 1-3/4" O.D. x 5/16" Deep U-Cup 1 - 100R9 3/4" I.D. x 7/8" O.D. O-Ring 1 - 100R5 1-1/2" I.D. x 1-3/4" O.D. O-Ring 1 - 10RS5 1-1/4" I.D. Rod Seal 1 - 10WS5 1-1/4" I.D. Rod Seal	311
2012N5	2 - 20CU1 2" A-Cups 1 - 100R9 3/4" I.D. x 7/8" O.D. O-Ring 1 - 100R4 1-3/4" I.D. x 2" O.D. O-Ring 1 - 10RS5 1-1/4" I.D. Rod Seal 1 - 10WS5 1-1/4" I.D. Wiper Seal	165