

MODEL 2030 PARTS INDEX

	PAGE
H-Frame, Yoke & Bucket	14
Hydraulic System	15
Cylinders	16
Cylinder Seal Kit	19

PAINT & DECALS

PART NO.	DESCRIPTION	QTY. REQ'D
L415	Ezee-On Decal - 1-1/2" x 8-3/4"	3
L014	Caution Decal	1
L001	Ezee-On Yellow Paint (1 Quart Can)	*
L002	Ezee-On Yellow Paint (1/2 Pint Can)	*
L015	Black Paint (1 Quart Can)	*
L016	Black Paint (1/2 Pint Can)	*

* As Required

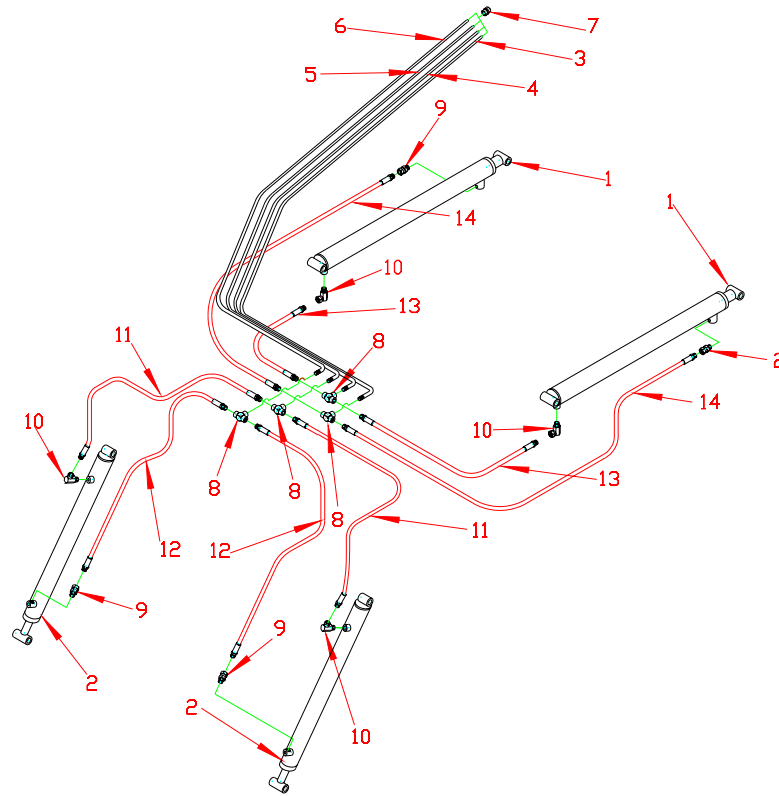
H-FRAME, YOKE & BUCKET

REF. NO.	PART NO.	DESCRIPTION	QTY REQ'D
1	LB343	2030 Yoke Assembly, Narrow Yoke c/w Pins	*
	LB342	2030 Yoke Assembly, Wide Yoke c/w Pins	*
	LB382	2030 Yoke Assembly, Extra Wide Yoke c/w Pins	*
2	LB381	2030 Main Frame Assembly c/w Pins	*
3	LB365	48" Bucket Assembly c/w 4 Pins	*
	LB375	54" Bucket Assembly c/w 4 Pins	*
	LB380	60" Bucket Assembly c/w 4 Pins	*
Back of Bucket	L350	Bucket Attaching Lug (Weld-On)	4
4	L348	48" Bucket Blade (Weld-On)	*
	L358	54" Bucket Blade (Weld-On)	*
	L363	60" Bucket Blade (Weld-On)	*
5	L667	3/4" x 3-11/16" Pin	8
6	L643	3/4" x 2-13/16" Pin	2
7	L665	3/4" x 2-9/16" Pin	2
8		3/16" x 1-1/4" Cotter Pin	12
Not Shown	10GN1	1/4" - 28 Grease Fitting	8

* As Required

HYDRAULIC SYSTEM (PRIOR TO OCTOBER 1, 2000)

REF. NO.	PART NO.	DESCRIPTION	QTY REQ'D
1	162	Lift Cylinder - See Cylinder Parts List Instructions on Page 17	2
2	244	Bucket Cylinder - See Cylinder Parts List Instructions on Page 17	2
3	L385	Bottom 1 Hydraulic Oil Line	1
4	L386	Bottom 2 Hydraulic Oil Line	1
5	L387	Bottom 3 Hydraulic Oil Line	1
6	L388	Bottom 4 Hydraulic Oil Line	1
7	DL5280	3/8" Connector Union	4
8	DL5282	3/8" x 3/8" x 3/8" Tee	4
9	DL29	3/8" Female-Female Swivel	2
10	DL9769	3/8" x 90 Degree Swivel Street Elbow	4
11	DL5284	3/8" x 90 Degree Swivel Elbow	2
12	L2929	1/4" x 20" Hydraulic Hose - w/3/8" Ends	4
13	L3017	1/4" x 32" Hydraulic Hose - w/3/8" Ends	2
14	L3018	1/4" x 37" Hydraulic Hose - w/3/8" Ends	2



HYDRAULIC SYSTEM (AFTER OCTOBER 1, 2000)

REF. NO.	PART NO.	DESCRIPTION	QTY REQ'D
1	312	Lift Cylinder - See Cylinder Parts List Instructions on Page 17	2
2	309	Bucket Cylinder - See Cylinder Parts List Instructions on Page 17	2
3	L385	Bottom 1 Hydraulic Oil Line	1
4	L386	Bottom 2 Hydraulic Oil Line	1
5	L387	Bottom 3 Hydraulic Oil Line	1
6	L388	Bottom 4 Hydraulic Oil Line	1
7	DL5280	3/8" Connector Union	4
8	DL5282	3/8" x 3/8" x 3/8" Tee	4
9	L1619	3/8" Male-Female Swivel Adapter	4
10	DL9769	3/8" x 90 Degree Swivel Street Elbow	4
11	L2929	1/4" x 20 Hydraulic Hose - w/3/8" Ends	2
12	L3095	1/4" x 28 Hydraulic Hose - w/3/8" Ends	2
13	L3017	1/4" x 32 Hydraulic Hose - w/3/8" Ends	2
14	L4351	1/4" x 52 Hydraulic Hose - w/3/8" Ends	2

EZEE-ON LOADER CYLINDER PARTS LIST

1. Identify your cylinder as to code number of complete cylinder. Use the complete assembly code number, listed below, and match up diameter, stroke, etc.
2. Once the code number has been established then locate cylinder further to book and use correct reference number and column to locate part number.

EZEE-ON CYLINDER PART NUMBER CODE

10 WS 1

Part Number

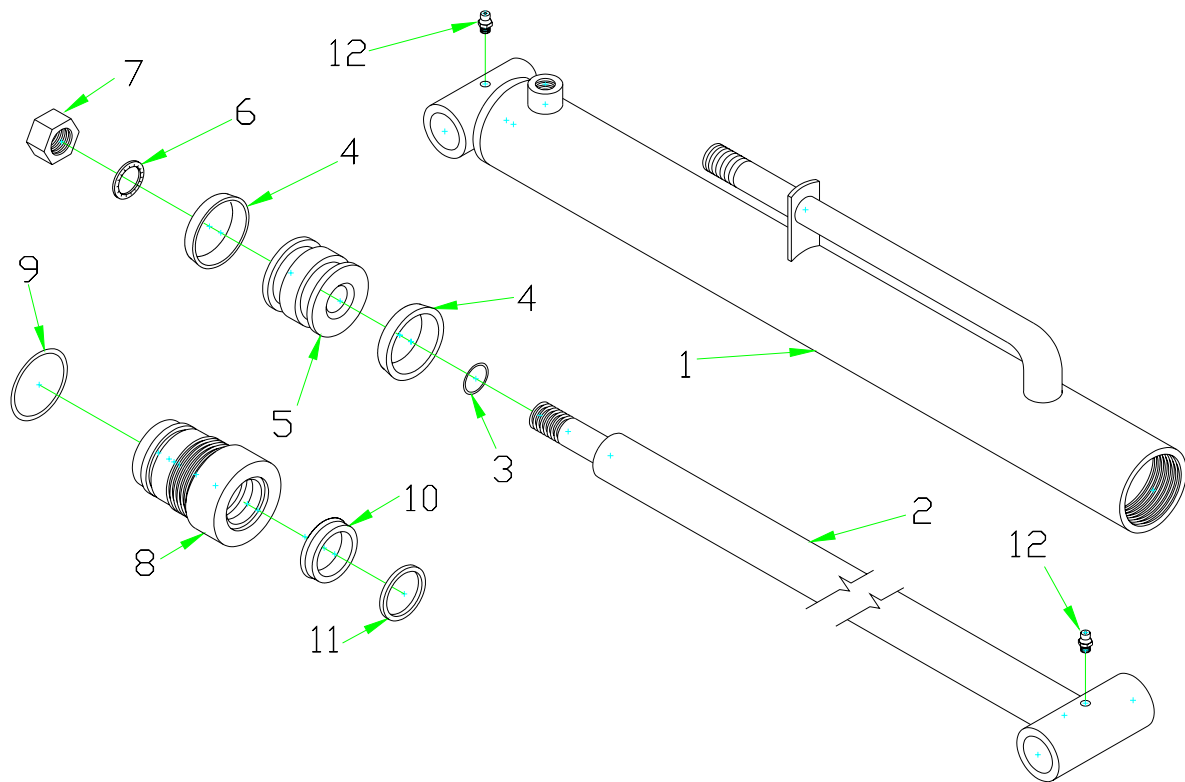
Part Description, Wiper Seal Kit

10 - Means Fits Many Sizes of Cylinders

17 - Means Used Most Commonly on 1-3/4" Cylinder

MODEL 2030 CYLINDER SPECIFICATIONS

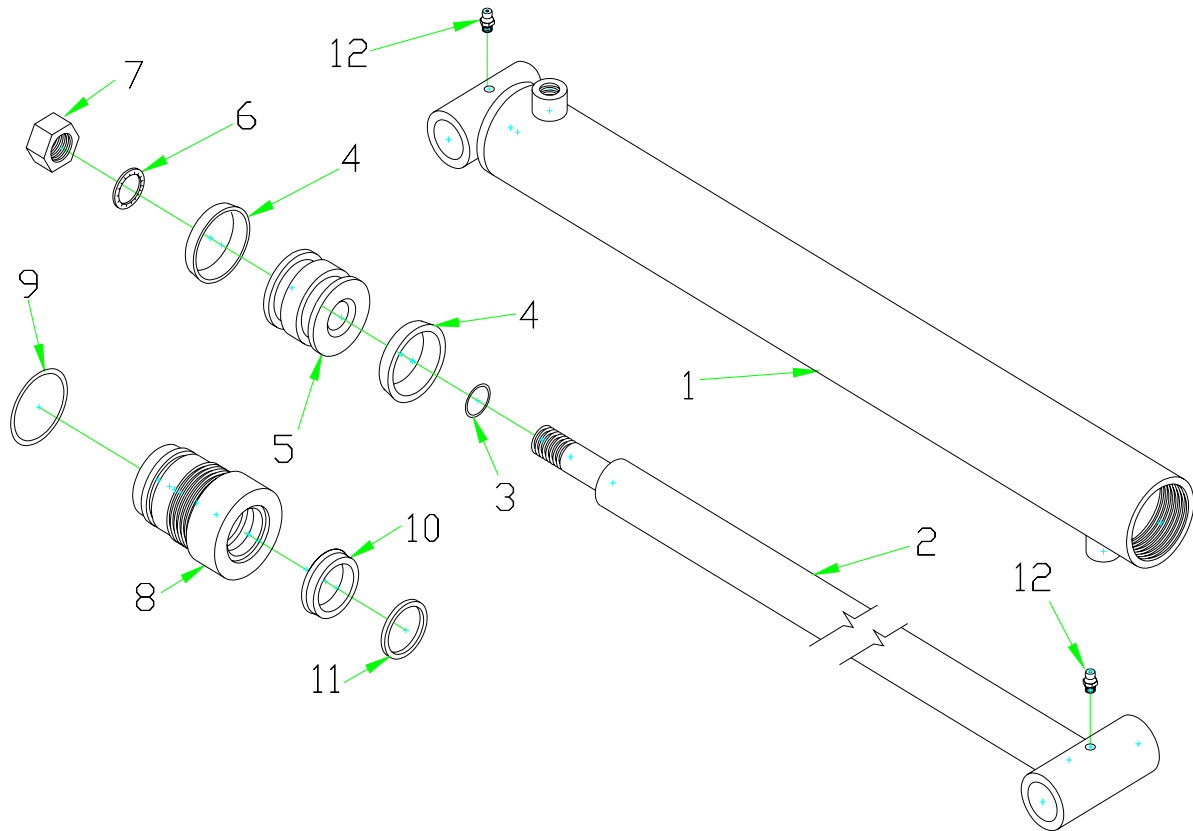
CODE	DIAMETER	STROKE	C-C LENGTH	SHAFT DIAMETER	TYPE	APPLICATION	PAGE NO.
244	1-3/4"	12	20-1/2"	1-1/4"	N5 (A-Cup)	Bucket	
295	1-3/4"	12	20-1/2"	1"	N5 (U-Cup)	Bucket	
309	1-3/4"	12	20-1/2"	1"	N5 (U-Cup) w/90 Degree Port	Bucket	
162	1-3/4"	18	26-1/2"	1-1/4"	N5 (A-Cup)	Lift	
312	1-3/4"	18	26-1/2"	1-1/4"	N5 (U-Cup) w/90 Degree Port	Lift	



**HYDRAULIC CYLINDER - N5 U-CUP TYPE - BUCKET
CYLINDER CODE NO. 295**

REF. NO.	PART NO.	DESCRIPTION	QTY REQ'D
1	17TU1	Tube Assembly - 1-3/4" x 12"	1
2	10SH15	Shaft - 1" x 12"	1
3	10OR9	O-Ring - 3/4" I.D. x 7/8" O.D.	1
4	17CU2	1-3/8" I.D. x 1-3/4" O.D. x 5/16" Depth	1
5	17BP2	1-3/4" O.D. x 3/4" I.D. Piston Block	1
6	10SW1	Star Washer - 3/4" I.D.	1
7	10NU1	3/4" N.F. Nut	1
8	17HP3	Head Plate - 1" I.D. x 1-3/4" O.D.	1
9	10ORS	O-Ring - 1-1/2" I.D. x 1-3/4" O.D.	1
10	10RS4	Rod Seal - 1" I.D. x 1-3/8" O.D. x 5/16"	1
11	10WS4	Wiper Seal - 1" I.D. x 1-3/8" O.D. x 1/8"	1
12	10GN1	1/4" - 28 Grease Fitting	2

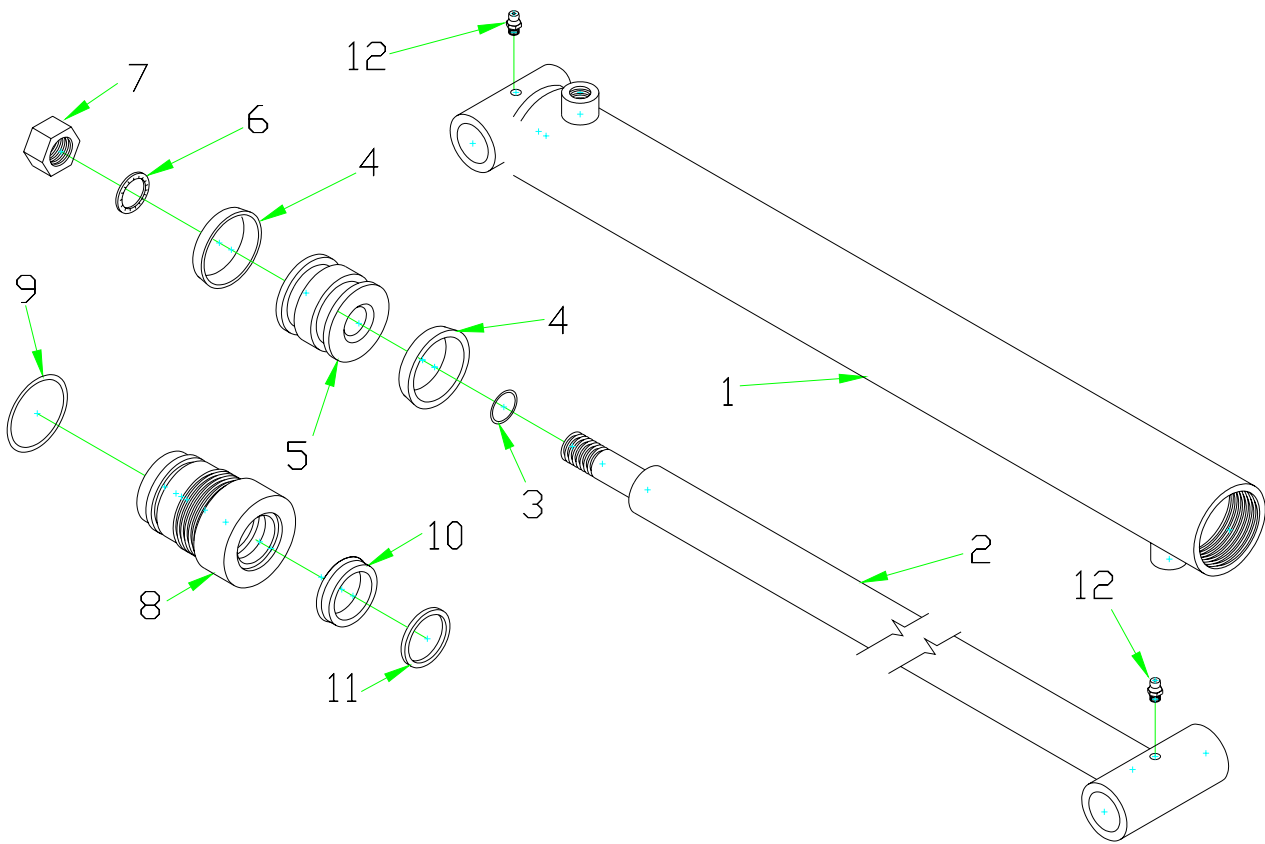
SEAL KIT 1710N5-U



**HYDRAULIC CYLINDER - BUCKET
(WITH 90 DEGREE PORT)**

REF. NO.	PART NO.	DESCRIPTION	CYLINDER CODE 309
1	17TU11	Tube Assembly - 1-3/4" x 12"	1
2		Shaft - 1" x 12"	1
3	100R9	O-Ring - 3/4" I.D. x 7/8" O.D.	1
4	17CU2	U-Cup - 1-3/8" I.D. x 1-3/4" O.D. x 5/16" Deep	2
5	17PB2	1-3/4" O.D. Piston Block	1
6	10SW1	Star Washer - 3/4" I.D.	1
7	10NU1	3/4" N.F. Nut	1
8	17HP5	Head Plate - 1-3/4" O.D. x 1" I.D.	1
9	100R5	O-Ring - 1-1/2" I.D. x 1-3/4" O.D.	1
10	10RS4	Rod Seal - 1" I.D.	1
11	10WS4	Wiper Seal - 1" I.D.	1
12	10GN1	1/4" - 28 Grease Fitting	2

SEAL KIT 1710U-N5



HYDRAULIC CYLINDER - LIFT

REF. NO.	PART NO.	DESCRIPTION	CYLINDER CODE 311
1	17TU13	Tube Assembly - 1-3/4" x 18" (w/90 Degree Port)	1
2	10SH33	Shaft - 1-1/4" x 18"	1
3	100R9	O-Ring - 3/4" I.D. x 7/8" O.D.	1
4	17CU2	U-Cup - 1-3/8" I.D. x 1-3/4" O.D. x 5/16" Deep	2
5	17PB2	1-3/4" O.D. Piston Block	1
6	10SW1	Star Washer - 3/4" I.D.	1
7	10NU1	3/4" N.F. Nut	1
8	17HP5	Head Plate - 1-3/4" O.D. x 1-1/4" I.D.	1
9	100R5	O-Ring - 1-1/2" I.D. x 1-3/4" O.D.	1
10	10RS4	Rod Seal - 1-1/4" I.D.	1
11	10WS4	Wiper Seal - 1-1/4" I.D.	1
12	10GN1	1/4" - 28 Grease Fitting	2

SEAL KIT 1712U-N5

**HYDRAULIC SYSTEM
LIFT & BUCKET**

REF. NO.	PART NO.	DESCRIPTION	CYLINDER CODE	
			162 QTY. REQ'D	244 QTY. REQ'D
1	17TU10	Tube Assembly - 1-3/4" x 18"	1	----
	17TU1	Tube Assembly - 1-3/4" x 12"	----	1
2	10SH33	Shaft - 1-1/4" x 18"	1	----
	10SH48	Shaft - 1-1/4" x 12"	----	1
3	10OR9	O-Ring - 3/4" I.D. x 7/8" O.D.	1	1
4	17FP1	Filler Plate	1	1
5	17CU1	1-3/4" A-Cup	2	2
6	17BP1	Back-Up Plate - 1-3/4" O.D. x 3/4" I.D.	1	1
7	10SW1	Star Washer - 3/4" I.D.	1	1
8	10NU1	3/4" N.F. Nut	1	1
9	17HP5	Head Plate - 1-3/4" O.D. x 1-1/4" I.D.	1	1
10	10OR5	O-Ring - 1-1/2" I.D. x 1-3/4" O.D.	1	1
11	10RS5	Rod Seal - 1-1/4" I.D.	1	1
12	10WS5	Wiper Seal - 1-1/4" I.D.	1	1
13	10GN1	1/4" - 28 Grease Fitting	2	2
14	17FP2	Filler Plate with O-Ring Groove	1	1

SEAL KIT 1712 N5

EZEE-ON CYLINDER REPAIR SEAL KIT

CODE 17 = 1-3/4" Bore

PART NO 1712N5-----N5 = THREADED HEAD TYPE

12 = 1-1/4" Shaft

CYLINDER SEAL KIT

KIT NO.	CONTENTS	FITS CYLINDER CODE NO.
1712N5	2 - 17CU1 1-3/4" A-Cups 1 - 100R9 3/4" I.D. x 7/8" O.D. O-Ring 1 - 100R5 1-1/2" I.D. x 1-3/4" O.D. O-Ring 1 - 10RS5 1-1/4" I.D. Rod Seal 1 - 10WS5 1-1/4" I.D. Wiper Seal	244, 162
1710N5-U	2 - 17CU2 1-3/8" I.D. x 1-3/4" O.D x 5/16" Deep U-Cup 1 - 100R9 3/4" I.D. x 7/8" O.D. O-Ring 1 - 100R5 1-1/2" I.D. x 1-3/4" O.D. O-Ring 1 - 10RS4 1" I.D. x 1-3/8" O.D. x 3/16" Rod Seal 1 - 10WS4 1" I.D. x 1-1/4" O.D. x 1/8" Wiper Seal	295
1712N5-U	2 - 17CU2 1-3/8" I.D. x 1-3/4" O.D x 5/16" Deep U-Cup 1 - 100R9 3/4" I.D. x 7/8" O.D. O-Ring 1 - 100R5 1-1/2" I.D. x 1-3/4" O.D. O-Ring 1 - 10RS5 1/4" I.D. Rod Seal 1 - 10WS5 1-1/4" I.D. Rod Seal	311